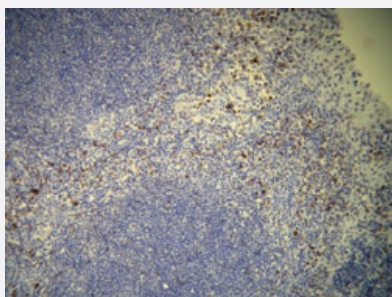


CD7 monoclonal antibody, clone C21-Q

Catalog # MAB15965 Size 200 uL

Applications



Immunohistochemistry (Formalin/PFA-fixed paraffin-embedded sections)

Immunohistochemical staining (Formalin-fixed paraffin-embedded sections) of human tonsil with CD7 monoclonal antibody, clone C21-Q (Cat # MAB15965).

Specification

Product Description	Rabbit monoclonal antibody raised against synthetic peptide of human CD7.
Immunogen	A synthetic peptide corresponding to C-terminus of human CD7.
Host	Rabbit
Reactivity	Human
Form	Liquid
Purification	EVAC purification
Recommend Usage	Immunohistochemistry (Formalin/PFA-fixed paraffin-embedded sections) (1:100-1:300) The optimal working dilution should be determined by the end user.
Storage Buffer	In 20 mM Tris-HCl buffer, pH 8.0 (20 mg/mL BSA, 0.05% Sodium Azide).
Storage Instruction	Store at 4°C. Do not freeze.
Note	This product contains sodium azide: a POISONOUS AND HAZARDOUS SUBSTANCE which should be handled by trained staff only.

Applications

- Immunohistochemistry (Formalin/PFA-fixed paraffin-embedded sections)

Immunohistochemical staining (Formalin-fixed paraffin-embedded sections) of human tonsil with CD7 monoclonal antibody, clone C21-Q (Cat # MAB15965).

Gene Info — CD7

Entrez GeneID [924](#)

Protein Accession# [P09564](#)

Gene Name CD7

Gene Alias GP40, LEU-9, TP41, Tp40

Gene Description CD7 molecule

Omim ID [186820](#)

Gene Ontology [Hyperlink](#)

Gene Summary This gene encodes a transmembrane protein which is a member of the immunoglobulin superfamily. This protein is found on thymocytes and mature T cells. It plays an essential role in T-cell interactions and also in T-cell/B-cell interaction during early lymphoid development. [provided by RefSeq]

Other Designations CD7 antigen|CD7 antigen (p41)|T-cell antigen CD7|T-cell leukemia antigen|p41 protein

Pathway

- [Hematopoietic cell lineage](#)