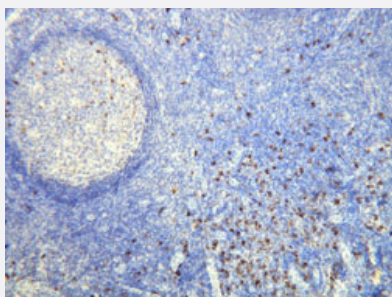


Lambda Light Chain monoclonal antibody, clone K22-Y

Catalog # MAB15933 Size 200 uL

Applications



Immunohistochemistry (Formalin/PFA-fixed paraffin-embedded sections)

Immunohistochemical staining (Formalin-fixed paraffin-embedded sections) of human tonsil with Lambda Light Chain monoclonal antibody, clone K22-Y (Cat # MAB15933).

Specification

Product Description	Rabbit monoclonal antibody raised against synthetic peptide of human lambda light chain.
Immunogen	A synthetic peptide corresponding to N-terminus of human lambda light chain IgG.
Host	Rabbit
Reactivity	Human
Form	Liquid
Purification	EVAC purification
Recommend Usage	Immunohistochemistry (Formalin/PFA-fixed paraffin-embedded sections) (1:100-1:500) The optimal working dilution should be determined by the end user.
Storage Buffer	In 20 mM Tris-HCl buffer, pH 8.0 (20 mg/mL BSA, 0.05% Sodium Azide).
Storage Instruction	Store at 4°C. Do not freeze.
Note	This product contains sodium azide: a POISONOUS AND HAZARDOUS SUBSTANCE which should be handled by trained staff only.

Applications

- Immunohistochemistry (Formalin/PFA-fixed paraffin-embedded sections)

Immunohistochemical staining (Formalin-fixed paraffin-embedded sections) of human tonsil with Lambda Light Chain monoclonal antibody, clone K22-Y (Cat # MAB15933).

Gene Info — IGLC1

Entrez GeneID	3537
---------------	----------------------

Protein Accession#	P0CG04
--------------------	------------------------

Gene Name	IGLC1
-----------	-------

Gene Alias	IGLC
------------	------

Gene Description	immunoglobulin lambda constant 1 (Mcg marker)
------------------	---

Omim ID	147220
---------	------------------------

Gene Ontology	Hyperlink
---------------	---------------------------

Other Designations	-
--------------------	---