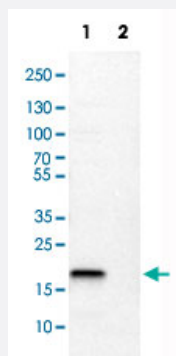


CLDN1 monoclonal antibody, clone CL3698

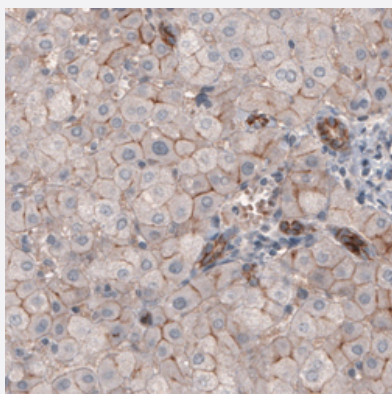
Catalog # MAB15814 Size 100 uL

Applications



Western Blot (Cell lysate)

Western Blot analysis of Lane 1: RT-4 and Lane 2: U-251 MG cell lysates with CLDN1 monoclonal antibody, clone CL3698 (Cat # MAB15814).



Immunohistochemistry (Formalin/PFA-fixed paraffin-embedded sections)

Immunohistochemical staining (Formalin-fixed paraffin-embedded sections) of human liver with CLDN1 monoclonal antibody, clone CL3698 (Cat # MAB15814) shows moderate membranous immunoreactivity in hepatocytes.

Specification

Product Description	Mouse monoclonal antibody raised against partial recombinant human CLDN1.
Immunogen	Recombinant protein corresponding to human CLDN1.
Epitope	This antibody binds to an epitope located within the peptide sequence KTTSYTPRPYPKPAPSSGKDYV as determined by overlapping synthetic peptides.
Sequence	KTTSYTPRPYPKPAPSSGKDYV
Host	Mouse

Reactivity	Human
Form	Liquid
Purification	Protein A purification
Isotype	IgG1
Recommend Usage	Immunohistochemistry (Formalin/PFA-fixed paraffin-embedded sections) (1:50-1:200) Western Blot (1:500-1:1000) The optimal working dilution should be determined by the end user.
Storage Buffer	In PBS, pH 7.2 (40% glycerol, 0.02% sodium azide).
Storage Instruction	Store at 4°C. For long term storage store at -20°C. Aliquot to avoid repeated freezing and thawing.
Note	This product contains sodium azide: a POISONOUS AND HAZARDOUS SUBSTANCE which should be handled by trained staff only.

Applications

- Western Blot (Cell lysate)

Western Blot analysis of Lane 1: RT-4 and Lane 2: U-251 MG cell lysates with CLDN1 monoclonal antibody, clone CL3698 (Cat # MAB15814).

- Immunohistochemistry (Formalin/PFA-fixed paraffin-embedded sections)

Immunohistochemical staining (Formalin-fixed paraffin-embedded sections) of human liver with CLDN1 monoclonal antibody, clone CL3698 (Cat # MAB15814) shows moderate membranous immunoreactivity in hepatocytes.

Gene Info — CLDN1

Entrez GeneID	9076
Protein Accession#	O95832
Gene Name	CLDN1
Gene Alias	CLD1, ILVASC, SEMP1
Gene Description	claudin 1
Omim ID	603718 607626
Gene Ontology	Hyperlink

Gene Summary

Tight junctions represent one mode of cell-to-cell adhesion in epithelial or endothelial cell sheets, forming continuous seals around cells and serving as a physical barrier to prevent solutes and water from passing freely through the paracellular space. These junctions are comprised of sets of continuous networking strands in the outwardly facing cytoplasmic leaflet, with complementary grooves in the inwardly facing extracytoplasmic leaflet. The protein encoded by this gene, a member of the claudin family, is an integral membrane protein and a component of tight junction strands. Loss of function mutations result in neonatal ichthyosis-sclerosing cholangitis syndrome. [provided by RefSeq]

Other Designations

senescence-associated epithelial membrane protein 1

Pathway

- [Cell adhesion molecules \(CAMs\)](#)
- [Leukocyte transendothelial migration](#)
- [Pathogenic Escherichia coli infection - EHEC](#)
- [Tight junction](#)

Disease

- [Genetic Predisposition to Disease](#)
- [Hepatitis C](#)
- [Substance Abuse](#)
- [Tobacco Use Disorder](#)