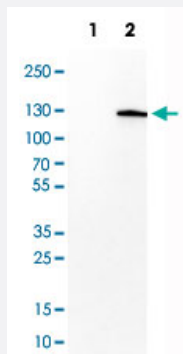


DAXX monoclonal antibody, clone CL3580

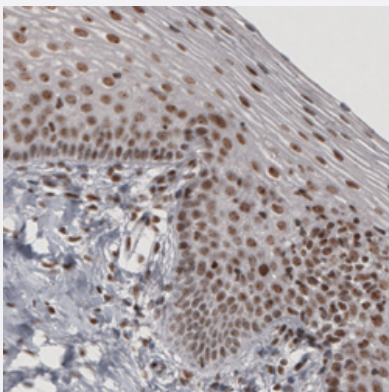
Catalog # MAB15808 Size 100 uL

Applications



Western Blot (Transfected lysate)

Western Blot analysis of Lane 1: negative control (vector only transfected HEK293T cell lysate) and Lane 2: over-expression lysate (co-expressed with a C-terminal myc-DDK tag in mammalian HEK293T cells) with DAXX monoclonal antibody, clone CL3580 (Cat # MAB15808).



Immunohistochemistry (Formalin/PFA-fixed paraffin-embedded sections)

Immunohistochemical staining (Formalin-fixed paraffin-embedded sections) of human uterine cervix with DAXX monoclonal antibody, clone CL3580 (Cat # MAB15808) shows moderate nuclear immunoreactivity in epithelial and underlying connective tissue cells.

Specification

Product Description	Mouse monoclonal antibody raised against partial recombinant human DAXX.
Immunogen	Recombinant protein corresponding to human DAXX.
Epitope	This antibody binds to an epitope located within the peptide sequence PEVVPFLYNR as determined by overlapping synthetic peptides.
Sequence	ARGSSSSGGKKCYKLENEKLFEEFLELCKMQTADHPEVVPFLYNRQQRAHSLFLASAEFCNLSRVLSRARSRLPAKLYVINELCTVLKAHSAKKKLNLAAPAATTSPNEPSGNNPPTHLSLDPTNAENTASQSPRTR

Host	Mouse
Reactivity	Human
Form	Liquid
Purification	Protein A purification
Isotype	IgG1
Recommend Usage	Immunohistochemistry (Formalin/PFA-fixed paraffin-embedded sections) (1:200-1:500) Western Blot (1:500-1:1000) The optimal working dilution should be determined by the end user.
Storage Buffer	In PBS, pH 7.2 (40% glycerol, 0.02% sodium azide).
Storage Instruction	Store at 4°C. For long term storage store at -20°C. Aliquot to avoid repeated freezing and thawing.
Note	This product contains sodium azide: a POISONOUS AND HAZARDOUS SUBSTANCE which should be handled by trained staff only.

Applications

- Western Blot (Transfected lysate)

Western Blot analysis of Lane 1: negative control (vector only transfected HEK293T cell lysate) and Lane 2: over-expression lysate (co-expressed with a C-terminal myc-DDK tag in mammalian HEK293T cells) with DAXX monoclonal antibody, clone CL3580 (Cat # MAB15808).

- Immunohistochemistry (Formalin/PFA-fixed paraffin-embedded sections)

Immunohistochemical staining (Formalin-fixed paraffin-embedded sections) of human uterine cervix with DAXX monoclonal antibody, clone CL3580 (Cat # MAB15808) shows moderate nuclear immunoreactivity in epithelial and underlying connective tissue cells.

Gene Info — DAXX

Entrez GeneID	1616
Protein Accession#	Q9UER7
Gene Name	DAXX
Gene Alias	BING2, DAP6, EAP1, MGC126245, MGC126246
Gene Description	death-domain associated protein

Omim ID [603186](#)

Gene Ontology [Hyperlink](#)

Gene Summary

This gene encodes a multifunctional protein that resides in multiple locations in the nucleus and in the cytoplasm. It interacts with a wide variety of proteins, such as apoptosis antigen Fas, centromere protein C, and transcription factor erythroblastosis virus E26 oncogene homolog 1. In the nucleus, the encoded protein functions as a potent transcription repressor that binds to sumoylated transcription factors. Its repression can be relieved by the sequestration of this protein into promyelocytic leukemia nuclear bodies or nucleoli. This protein also associates with centromeres in G2 phase. In the cytoplasm, the encoded protein may function to regulate apoptosis. The subcellular localization and function of this protein are modulated by post-translational modifications, including sumoylation, phosphorylation and polyubiquitination. Alternative splicing results in multiple transcript variants. [provided by RefSeq]

Other Designations

CENP-C binding protein|ETS1-associated protein 1|Fas-binding protein|OTTHUMP00000029289|OTTHUMP00000029290|death-associated protein 6

Pathway

- [Amyotrophic lateral sclerosis \(ALS\)](#)
- [MAPK signaling pathway](#)

Disease

- [Diabetes Mellitus](#)
- [Disease Susceptibility](#)
- [Genetic Predisposition to Disease](#)
- [Lupus Erythematosus](#)