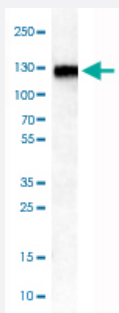


LAMP1 monoclonal antibody, clone CL3482

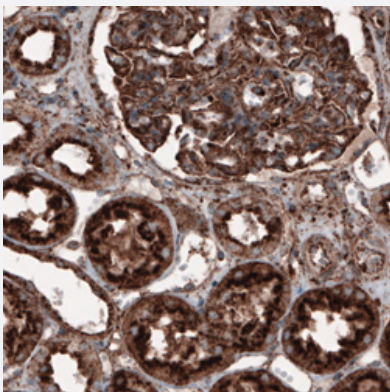
Catalog # MAB15803 Size 100 uL

Applications



Western Blot (Cell lysate)

Western Blot analysis of RT-4 cell lysate with LAMP1 monoclonal antibody, clone CL3482 (Cat # MAB15803).



Immunohistochemistry (Formalin/PFA-fixed paraffin-embedded sections)

Immunohistochemical staining (Formalin-fixed paraffin-embedded sections) of human kidney with LAMP1 monoclonal antibody, clone CL3482 (Cat # MAB15803) shows strong granular cytoplasmic immunoreactivity in renal glomerulus and tubules cells.

Specification

Product Description	Mouse monoclonal antibody raised against partial recombinant human LAMP1.
Immunogen	Recombinant protein corresponding to human LAMP1.
Epitope	This antibody binds to an epitope located within the peptide sequence ESITDIRADI as determined by overlapping synthetic peptides.
Sequence	NFSAAFSVNYDTKSGPKNMTFDLPSDATVVLNRSSCGKENTSDPSLVIAFGRGHTLTNLFTRNAT RYSVQLMSFVYNLSDTHLFPNASSKEIKTVESITDIRADIDKKYRCVSGTQVHMNNVTVTLHDA
Host	Mouse

Reactivity	Human
Form	Liquid
Purification	Protein A purification
Isotype	IgG1
Recommend Usage	Immunohistochemistry (Formalin/PFA-fixed paraffin-embedded sections) (1:10000-1:20000) Western Blot (1:500-1:1000) The optimal working dilution should be determined by the end user.
Storage Buffer	In PBS, pH 7.2 (40% glycerol, 0.02% sodium azide).
Storage Instruction	Store at 4°C. For long term storage store at -20°C. Aliquot to avoid repeated freezing and thawing.
Note	This product contains sodium azide: a POISONOUS AND HAZARDOUS SUBSTANCE which should be handled by trained staff only.

Applications

- Western Blot (Cell lysate)

Western Blot analysis of RT-4 cell lysate with LAMP1 monoclonal antibody, clone CL3482 (Cat # MAB15803).

- Immunohistochemistry (Formalin/PFA-fixed paraffin-embedded sections)

Immunohistochemical staining (Formalin-fixed paraffin-embedded sections) of human kidney with LAMP1 monoclonal antibody, clone CL3482 (Cat # MAB15803) shows strong granular cytoplasmic immunoreactivity in renal glomerulus and tubules cells.

Gene Info — LAMP1

Entrez GeneID	3916
Protein Accession#	P11279
Gene Name	LAMP1
Gene Alias	CD107a, LAMPA, LGP120
Gene Description	lysosomal-associated membrane protein 1
Omim ID	153330
Gene Ontology	Hyperlink

Gene Summary

The protein encoded by this gene is a member of a family of membrane glycoproteins. This glyco protein provides selectins with carbohydrate ligands. It may also play a role in tumor cell metastasis. [provided by RefSeq]

Other Designations

OTTHUMP00000040663

Pathway

- [Lysosome](#)