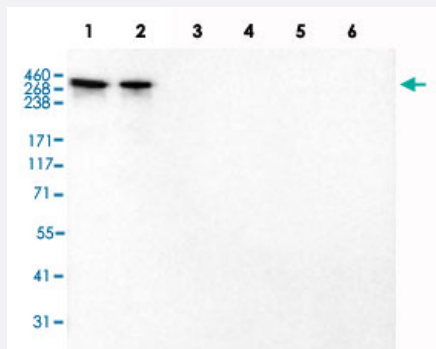


LAMA2 monoclonal antibody, clone CL3450

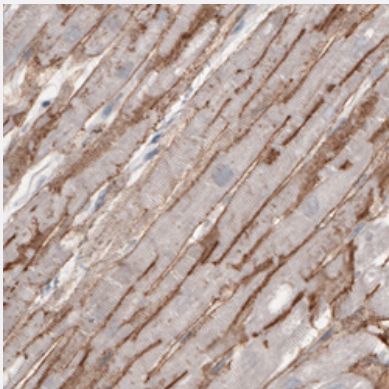
Catalog # MAB15802 Size 100 uL

Applications



Western Blot (Recombinant protein)

Western Blot analysis of recombinant protein Lane 1: Laminin-211, Lane 2: Laminin-221, Lane 3: Laminin-332, Lane 4: Laminin-421, Lane 5: Laminin-511 and Lane 6: Laminin-121 with LAMA2 monoclonal antibody, clone CL3450 (Cat # MAB15802).



Immunohistochemistry (Formalin/PFA-fixed paraffin-embedded sections)

Immunohistochemical staining (Formalin-fixed paraffin-embedded sections) of human heart muscle with LAMA2 monoclonal antibody, clone CL3450 (Cat # MAB15802) shows membranous immunoreactivity in muscle fibers.

Specification

Product Description	Mouse monoclonal antibody raised against partial recombinant human LAMA2.
Immunogen	Recombinant protein corresponding to human LAMA2.
Epitope	This antibody binds to an epitope located within the peptide sequence DKLKPIKELEDNLKK as determined by overlapping synthetic peptides.
Sequence	DKLKPIKELEDNLKKNISEIKELINQARKQANSIKVSVSSGGDCIRTYKPEIKKGSYNNIVNVKTAVA DNLLFYLGSAKFIDFLAIEMRKGKVSFLWDVGSVGVRVEYDPLTIDDSYWYRIVASRTGRNGT
Host	Mouse

Reactivity	Human, Mouse, Rat
Form	Liquid
Purification	Protein A purification
Isotype	IgG1
Recommend Usage	Immunohistochemistry (Formalin/PFA-fixed paraffin-embedded sections) (1:200-1:500) Western Blot (1:500-1:1000) The optimal working dilution should be determined by the end user.
Storage Buffer	In PBS, pH 7.2 (40% glycerol, 0.02% sodium azide).
Storage Instruction	Store at 4°C. For long term storage store at -20°C. Aliquot to avoid repeated freezing and thawing.
Note	This product contains sodium azide: a POISONOUS AND HAZARDOUS SUBSTANCE which should be handled by trained staff only.

Applications

- Western Blot (Recombinant protein)

Western Blot analysis of recombinant protein Lane 1: Laminin-211, Lane 2: Laminin-221, Lane 3: Laminin-332, Lane 4: Laminin-421, Lane 5: Laminin-511 and Lane 6: Laminin-121 with LAMA2 monoclonal antibody, clone CL3450 (Cat # MAB15802).

- Immunohistochemistry (Formalin/PFA-fixed paraffin-embedded sections)

Immunohistochemical staining (Formalin-fixed paraffin-embedded sections) of human heart muscle with LAMA2 monoclonal antibody, clone CL3450 (Cat # MAB15802) shows membranous immunoreactivity in muscle fibers.

Gene Info — LAMA2

Entrez GeneID	3908
Protein Accession#	P24043
Gene Name	LAMA2
Gene Alias	LAMM
Gene Description	laminin, alpha 2
Omim ID	156225 607855
Gene Ontology	Hyperlink

Gene Summary

Laminin, an extracellular protein, is a major component of the basement membrane. It is thought to mediate the attachment, migration, and organization of cells into tissues during embryonic development by interacting with other extracellular matrix components. It is composed of three subunits, alpha, beta, and gamma, which are bound to each other by disulfide bonds into a cross-shaped molecule. This gene encodes the alpha 2 chain, which constitutes one of the subunits of laminin 2 (merosin) and laminin 4 (s-merosin). Mutations in this gene have been identified as the cause of congenital merosin-deficient muscular dystrophy. Two transcript variants encoding different proteins have been found for this gene. [provided by RefSeq]

Other Designations

OTTHUMP00000017189|laminin M|laminin alpha 2 subunit|merosin heavy chain

Pathway

- [Arrhythmogenic right ventricular cardiomyopathy \(ARVC\)](#)
- [ECM-receptor interaction](#)
- [Focal adhesion](#)
- [Hypertrophic cardiomyopathy \(HCM\)](#)
- [Pathways in cancer](#)
- [Small cell lung cancer](#)

Disease

- [Genetic Predisposition to Disease](#)
- [Leprosy](#)
- [Tobacco Use Disorder](#)