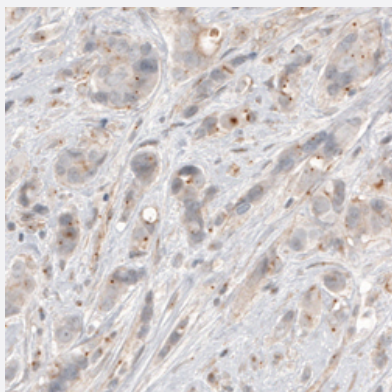


CDK5RAP2 monoclonal antibody, clone CL3392

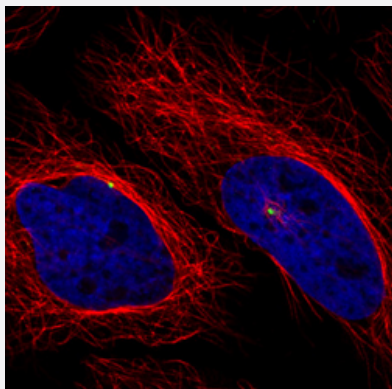
Catalog # MAB15800 Size 100 uL

Applications



Immunohistochemistry (Formalin/PFA-fixed paraffin-embedded sections)

Immunohistochemical staining (Formalin-fixed paraffin-embedded sections) of human breast cancer with CDK5RAP2 monoclonal antibody, clone CL3392 (Cat # MAB15800) shows centrosome-like immunoreactivity in tumor cells.



Immunofluorescence

Immunofluorescent staining of HeLa cells with CDK5RAP2 monoclonal antibody, clone CL3392 (Cat # MAB15800) (Green) shows specific the centrosome. Microtubule and nuclear probes are visualized in red and blue, respectively (where available).

Specification

Product Description	Mouse monoclonal antibody raised against partial recombinant human CDK5RAP2.
Immunogen	Recombinant protein corresponding to human CDK5RAP2.
Epitope	This antibody binds to an epitope located within the peptide sequence YETSEKSFFS as determined by overlapping synthetic peptides.
Sequence	ELLEKLEKLFLNGKSVGEMNTQNELMERIEEDNLTYQHLLPESPEPSASHALSDYETSEKSFFS RDQKQDNETEKTSMV

Host	Mouse
Reactivity	Human
Form	Liquid
Purification	Protein A purification
Isotype	IgG1
Recommend Usage	Immunofluorescence (1-4 ug/mL) Immunohistochemistry (Formalin/PFA-fixed paraffin-embedded sections) (1:200-1:500) The optimal working dilution should be determined by the end user.
Storage Buffer	In PBS, pH 7.2 (40% glycerol, 0.02% sodium azide).
Storage Instruction	Store at 4°C. For long term storage store at -20°C. Aliquot to avoid repeated freezing and thawing.
Note	This product contains sodium azide: a POISONOUS AND HAZARDOUS SUBSTANCE which should be handled by trained staff only.

Applications

- Immunohistochemistry (Formalin/PFA-fixed paraffin-embedded sections)

Immunohistochemical staining (Formalin-fixed paraffin-embedded sections) of human breast cancer with CDK5RAP2 monoclonal antibody, clone CL3392 (Cat # MAB15800) shows centrosome-like immunoreactivity in tumor cells.

- Immunofluorescence

Immunofluorescent staining of HeLa cells with CDK5RAP2 monoclonal antibody, clone CL3392 (Cat # MAB15800) (Green) shows specific the centrosome. Microtubule and nuclear probes are visualized in red and blue, respectively (where available).

Gene Info — CDK5RAP2

Entrez GeneID	55755
Protein Accession#	Q96SN8
Gene Name	CDK5RAP2
Gene Alias	C48, Cep215, DKFZp686B1070, DKFZp686D1070, KIAA1633, MCPH3
Gene Description	CDK5 regulatory subunit associated protein 2
Omim ID	604804 608201

Gene Ontology

[Hyperlink](#)

Gene Summary

Neuronal CDC2-like kinase, which is involved in the regulation of neuronal differentiation, is composed of a catalytic subunit, CDK5, and an activating subunit, p25NCK5A. The protein encoded by this gene binds to p25NCK5A and therefore may be involved in neuronal differentiation. The encoded protein may also be a substrate of neuronal CDC2-like kinase. Multiple transcript variants exist for this gene, but the full-length nature of only two has been determined. [provided by RefSeq

Other Designations

CDK5 activator-binding protein C48|OTTHUMP00000022800|OTTHUMP00000064031|centrosomal protein 215 kDa

Disease

- [Genetic Predisposition to Disease](#)
- [Microcephaly](#)