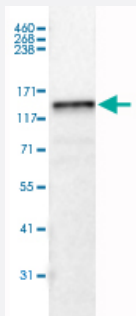


LAMB3 monoclonal antibody, clone CL3353

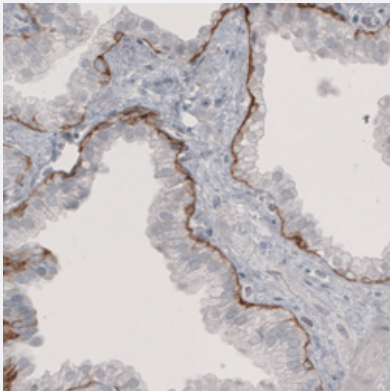
Catalog # MAB15799 Size 100 uL

Applications



Western Blot (Tissue lysate)

Western Blot analysis of human lung tissue lysate with LAMB3 monoclonal antibody, clone CL3353 (Cat # MAB15799).



Immunohistochemistry (Formalin/PFA-fixed paraffin-embedded sections)

Immunohistochemical staining (Formalin-fixed paraffin-embedded sections) of human prostate with LAMB3 monoclonal antibody, clone CL3353 (Cat # MAB15799) shows immunoreactivity in basement membrane of glandular epithelium.

Specification

Product Description	Mouse monoclonal antibody raised against partial recombinant human LAMB3.
Immunogen	Recombinant protein corresponding to human LAMB3.
Epitope	This antibody binds to an epitope located within the peptide sequence ASEQALSAQEGFERI as determined by overlapping synthetic peptides.
Sequence	KLVTSMTKQLGDFWTRMEELRHQARQQGAEAVQAQQLAEGASEQALSAQEGFERIKQKYAELK DRLGQSSMLGEQGARIQSVKTEAEELFGETMEMMDRMKDMELLELLRGSQAIMLRSADLTGLEKR VEQ

Host	Mouse
Reactivity	Human, Rat
Form	Liquid
Purification	Protein A purification
Isotype	IgG1
Recommend Usage	Immunohistochemistry (Formalin/PFA-fixed paraffin-embedded sections) (1:500-1:1000) Western Blot (1:500-1:1000) The optimal working dilution should be determined by the end user.
Storage Buffer	In PBS, pH 7.2 (40% glycerol, 0.02% sodium azide).
Storage Instruction	Store at 4°C. For long term storage store at -20°C. Aliquot to avoid repeated freezing and thawing.
Note	This product contains sodium azide: a POISONOUS AND HAZARDOUS SUBSTANCE which should be handled by trained staff only.

Applications

- Western Blot (Tissue lysate)

Western Blot analysis of human lung tissue lysate with LAMB3 monoclonal antibody, clone CL3353 (Cat # MAB15799).

- Immunohistochemistry (Formalin/PFA-fixed paraffin-embedded sections)

Immunohistochemical staining (Formalin-fixed paraffin-embedded sections) of human prostate with LAMB3 monoclonal antibody, clone CL3353 (Cat # MAB15799) shows immunoreactivity in basement membrane of glandular epithelium.

Gene Info — LAMB3

Entrez GeneID	3914
Protein Accession#	Q13751
Gene Name	LAMB3
Gene Alias	BM600-125KDA, FLJ99565, LAM5, LAMNB1
Gene Description	laminin, beta 3
Omim ID	150310 226650 226700
Gene Ontology	Hyperlink

Gene Summary

The product encoded by this gene is a laminin that belongs to a family of basement membrane proteins. This protein is a beta subunit laminin, which together with an alpha and a gamma subunit, forms laminin-5. Mutations in this gene cause epidermolysis bullosa junctional Herlitz type, and generalized atrophic benign epidermolysis bullosa, diseases that are characterized by blistering of the skin. Multiple alternatively spliced transcript variants that encode the same protein have been found for this gene. [provided by RefSeq]

Other Designations

OTTHUMP00000034555|OTTHUMP00000034640|kalinin B1 chain|kalinin-140kDa|laminin B1 chain|laminin S B3 chain|laminin, beta 3 (nicein (125kD), kalinin (140kD), BM600 (125kD))|nicein-125kDa

Pathway

- [ECM-receptor interaction](#)
- [Focal adhesion](#)
- [Pathways in cancer](#)
- [Small cell lung cancer](#)

Disease

- [Genetic Predisposition to Disease](#)
- [Macular Degeneration](#)
- [Uterine Cervical Neoplasms](#)