

GAPDH monoclonal antibody, clone CL3265

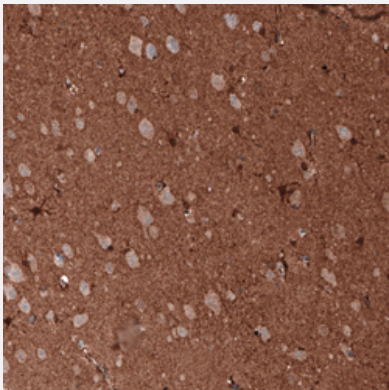
Catalog # MAB15797 Size 100 uL

Applications



Western Blot (Cell lysate)

Western Blot analysis of Lane 1: HeLa, Lane 2: HEK 293, Lane 3: A-431, Lane 4: HepG2, Lane 5: NIH-3T3 and Lane 6: NBT-II cell lysates with GAPDH monoclonal antibody, clone CL3265 (Cat # MAB15797).



Immunohistochemistry (Formalin/PFA-fixed paraffin-embedded sections)

Immunohistochemical staining (Formalin-fixed paraffin-embedded sections) of human cerebral cortex with GAPDH monoclonal antibody, clone CL3265 (Cat # MAB15797) shows immunoreactivity in neuropil as well as strong cytoplasmic positivity in a subset of cells.

Specification

Product Description	Mouse monoclonal antibody raised against partial recombinant human GAPDH.
Immunogen	Recombinant protein corresponding to human GAPDH.
Epitope	This antibody binds to an epitope located within the peptide sequence ERDPSKIKWGDAGAE as determined by overlapping synthetic peptides.
Sequence	TVKAENGKLVINGNPITIFQERDPSKIKWGDAGAEYVVESTGVFTTMEKAGAHLLQGGAKRVIIS
Host	Mouse

Reactivity	Human, Mouse, Rat
Form	Liquid
Purification	Protein A purification
Isotype	IgG1
Recommend Usage	Immunohistochemistry (Formalin/PFA-fixed paraffin-embedded sections) (1:5000-1:10000) Western Blot (1:500-1:1000) The optimal working dilution should be determined by the end user.
Storage Buffer	In PBS, pH 7.2 (40% glycerol, 0.02% sodium azide).
Storage Instruction	Store at 4°C. For long term storage store at -20°C. Aliquot to avoid repeated freezing and thawing.
Note	This product contains sodium azide: a POISONOUS AND HAZARDOUS SUBSTANCE which should be handled by trained staff only.

Applications

- Western Blot (Cell lysate)

Western Blot analysis of Lane 1: HeLa, Lane 2: HEK 293, Lane 3: A-431, Lane 4: HepG2, Lane 5: NIH-3T3 and Lane 6: NBT-II cell lysates with GAPDH monoclonal antibody, clone CL3265 (Cat # MAB15797).

- Immunohistochemistry (Formalin/PFA-fixed paraffin-embedded sections)

Immunohistochemical staining (Formalin-fixed paraffin-embedded sections) of human cerebral cortex with GAPDH monoclonal antibody, clone CL3265 (Cat # MAB15797) shows immunoreactivity in neuropil as well as strong cytoplasmic positivity in a subset of cells.

Gene Info — GAPDH

Entrez GeneID	2597
Protein Accession#	P04406
Gene Name	GAPDH
Gene Alias	G3PD, GAPD, MGC88685
Gene Description	glyceraldehyde-3-phosphate dehydrogenase
Omim ID	138400
Gene Ontology	Hyperlink

Gene Summary

The product of this gene catalyzes an important energy-yielding step in carbohydrate metabolism, the reversible oxidative phosphorylation of glyceraldehyde-3-phosphate in the presence of inorganic phosphate and nicotinamide adenine dinucleotide (NAD). The enzyme exists as a tetramer of identical chains. Many pseudogenes similar to this locus are present in the human genome. [provided by RefSeq]

Other Designations

OTTHUMP00000174431|OTTHUMP00000174432|aging-associated gene 9 protein|glyceraldehyde 3-phosphate dehydrogenase

Pathway

- [Biosynthesis of alkaloids derived from histidine and purine](#)
- [Biosynthesis of alkaloids derived from ornithine](#)
- [Biosynthesis of alkaloids derived from shikimate pathway](#)
- [Biosynthesis of alkaloids derived from terpenoid and polyketide](#)
- [Biosynthesis of phenylpropanoids](#)
- [Biosynthesis of plant hormones](#)
- [Biosynthesis of terpenoids and steroids](#)
- [Glycolysis / Gluconeogenesis](#)
- [Metabolic pathways](#)

Disease

- [Alzheimer disease](#)
- [Cardiovascular Diseases](#)
- [Diabetes Complications](#)
- [Metabolic Syndrome X](#)
- [Neoplasms](#)
- [Nerve Degeneration](#)
- [Osteoporosis](#)