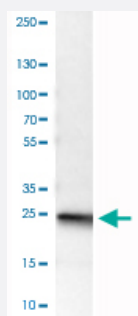


# UCHL1 monoclonal antibody, clone CL3210

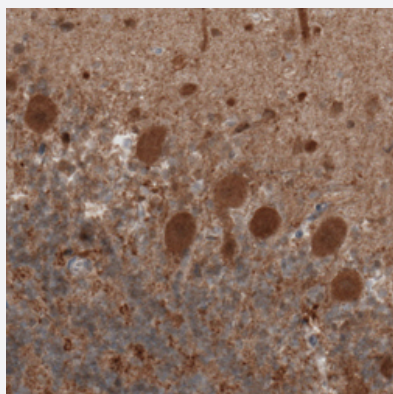
Catalog # MAB15796      Size 100 uL

## Applications



### Western Blot (Tissue lysate)

Western Blot analysis of human cerebral cortex tissue lysate with UCHL1 monoclonal antibody, clone CL3210 (Cat # MAB15796).



### Immunohistochemistry (Formalin/PFA-fixed paraffin-embedded sections)

Immunohistochemical staining (Formalin-fixed paraffin-embedded sections) of human cerebellum with UCHL1 monoclonal antibody, clone CL3210 (Cat # MAB15796) shows moderate positivity in Purkinje cells.

## Specification

<b>Product Description</b>	Mouse monoclonal antibody raised against partial recombinant human UCHL1.
<b>Immunogen</b>	Recombinant protein corresponding to human UCHL1.
<b>Epitope</b>	This antibody binds to an epitope located within the peptide sequence AVANNQDKLG as determined by overlapping synthetic peptides.
<b>Sequence</b>	QEVSPKVYFMKQTIGNSCGTIGLIHAVANNQDKLGFEDGSVLKQFLSETEKMSPEDRAKCFEKNE AIQAAHDAVAQEGQCRVDDKVNHFHILFNNVDGHLYELDGRMPFPVNHGASSEDLLKDAAKVC REFTEREQGEVRFSAVAL

Host	Mouse
Reactivity	Human, Mouse, Rat
Form	Liquid
Purification	Protein A purification
Isotype	IgG1
Recommend Usage	Immunohistochemistry (Formalin/PFA-fixed paraffin-embedded sections) (1:5000-1:10000) Western Blot (1:500-1:1000) The optimal working dilution should be determined by the end user.
Storage Buffer	In PBS, pH 7.2 (40% glycerol, 0.02% sodium azide).
Storage Instruction	Store at 4°C. For long term storage store at -20°C. Aliquot to avoid repeated freezing and thawing.
Note	This product contains sodium azide: a POISONOUS AND HAZARDOUS SUBSTANCE which should be handled by trained staff only.

## Applications

- Western Blot (Tissue lysate)

Western Blot analysis of human cerebral cortex tissue lysate with UCHL1 monoclonal antibody, clone CL3210 (Cat # MAB15796).

- Immunohistochemistry (Formalin/PFA-fixed paraffin-embedded sections)

Immunohistochemical staining (Formalin-fixed paraffin-embedded sections) of human cerebellum with UCHL1 monoclonal antibody, clone CL3210 (Cat # MAB15796) shows moderate positivity in Purkinje cells.

## Gene Info — UCHL1

Entrez GeneID	<a href="#">7345</a>
Protein Accession#	<a href="#">P09936</a>
Gene Name	UCHL1
Gene Alias	PARK5, PGP9.5, Uch-L1
Gene Description	ubiquitin carboxyl-terminal esterase L1 (ubiquitin thiolesterase)
Omim ID	<a href="#">168600</a> <a href="#">191342</a>

**Gene Ontology**[Hyperlink](#)**Gene Summary**

The protein encoded by this gene belongs to the peptidase C12 family. This enzyme is a thiol protease that hydrolyzes a peptide bond at the C-terminal glycine of ubiquitin. This gene is specifically expressed in the neurons and in cells of the diffuse neuroendocrine system. Mutations in this gene may be associated with Parkinson disease

**Other Designations**

ubiquitin C-terminal esterase L1|ubiquitin carboxyl-terminal esterase L1|ubiquitin thiolesterase L1

**Disease**

- [Alzheimer disease](#)
- [Genetic Predisposition to Disease](#)
- [Huntington disease](#)
- [Movement Disorders](#)
- [Multiple System Atrophy](#)
- [Parkinson disease](#)
- [Parkinsonian Disorders](#)