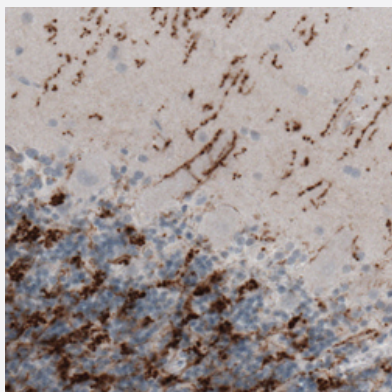


# SLC17A6 monoclonal antibody, clone CL2921

Catalog # MAB15779      Size 100 uL

## Applications



### Immunohistochemistry (Formalin/PFA-fixed paraffin-embedded sections)

Immunohistochemical staining (Formalin-fixed paraffin-embedded sections) of human cerebellum with SLC17A6 monoclonal antibody, clone CL2921 (Cat # MAB15779) shows strong immunoreactivity in glutamatergic synapses in molecular and granular layers.

## Specification

<b>Product Description</b>	Mouse monoclonal antibody raised against partial recombinant human SLC17A6.
<b>Immunogen</b>	Recombinant protein corresponding to human SLC17A6.
<b>Epitope</b>	This antibody binds to an epitope located within the peptide sequence EETGDITQNYINYGT as determined by overlapping synthetic peptides.
<b>Sequence</b>	CGFIHEDELDEETGDITQNYINYGTTKSYGATTQANGGWPSGWEEKKEEFVQGEVQDSHSYKDRVDY
<b>Host</b>	Mouse
<b>Reactivity</b>	Human, Mouse, Rat
<b>Form</b>	Liquid
<b>Purification</b>	Protein A purification
<b>Isotype</b>	IgG1

<b>Recommend Usage</b>	Immunohistochemistry (Formalin/PFA-fixed paraffin-embedded sections) (1:200-1:500) The optimal working dilution should be determined by the end user.
<b>Storage Buffer</b>	In PBS, pH 7.2 (40% glycerol, 0.02% sodium azide).
<b>Storage Instruction</b>	Store at 4°C. For long term storage store at -20°C. Aliquot to avoid repeated freezing and thawing.
<b>Note</b>	This product contains sodium azide: a POISONOUS AND HAZARDOUS SUBSTANCE which should be handled by trained staff only.

## Applications

- Immunohistochemistry (Formalin/PFA-fixed paraffin-embedded sections)

Immunohistochemical staining (Formalin-fixed paraffin-embedded sections) of human cerebellum with SLC17A6 monoclonal antibody, clone CL2921 (Cat # MAB15779) shows strong immunoreactivity in glutamatergic synapses in molecular and granular layers.

## Gene Info — SLC17A6

<b>Entrez GeneID</b>	<a href="#">57084</a>
<b>Protein Accession#</b>	<a href="#">Q9P2U8</a>
<b>Gene Name</b>	SLC17A6
<b>Gene Alias</b>	DNPI, VGLUT2
<b>Gene Description</b>	solute carrier family 17 (sodium-dependent inorganic phosphate cotransporter), member 6
<b>Omim ID</b>	<a href="#">607563</a>
<b>Gene Ontology</b>	<a href="#">Hyperlink</a>
<b>Gene Summary</b>	O
<b>Other Designations</b>	differentiation-associated Na-dependent inorganic phosphate cotransporter vesicular glutamate transporter 2

## Disease

- [Cognition](#)

- [Genetic Predisposition to Disease](#)
- [Mental Disorders](#)
- [Prostatic Neoplasms](#)
- [Schizophrenia](#)
- [Schizophrenic Psychology](#)
- [Weight Gain](#)