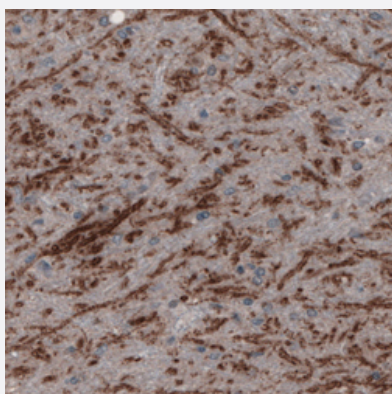


# SLC32A1 monoclonal antibody, clone CL2793

Catalog # MAB15772      Size 100 uL

## Applications



### Immunohistochemistry (Formalin/PFA-fixed paraffin-embedded sections)

Immunohistochemical staining (Formalin-fixed paraffin-embedded sections) of human substantia nigra pars reticulata with SLC32A1 monoclonal antibody, clone CL2793 (Cat # MAB15772) shows positivity in GABAergic neural fibers.

## Specification

|                     |   |
|---------------------|---|
| Product Description | Mouse monoclonal antibody raised against partial recombinant human SLC32A1.   |
| Immunogen           | Recombinant protein corresponding to human SLC32A1.   |
| Sequence            | ATSVSNKSQAKMSGMFARMGFQAATDEEAVGFAHCDDLDFEHRQGLQMDILKAEGEPCGDEG<br>AEAPVEGDIHYQRGSGAPLPPSGSKDQVG   |
| Host                | Mouse   |
| Reactivity          | Human, Mouse, Rat   |
| Form                | Liquid  |
| Purification        | Protein A purification  |
| Isotype             | IgG1  |
| Recommend Usage     | Immunohistochemistry (Formalin/PFA-fixed paraffin-embedded sections) (1:50-1:200)<br>The optimal working dilution should be determined by the end user. |
| Storage Buffer      | In PBS, pH 7.2 (40% glycerol, 0.02% sodium azide).  |

**Storage Instruction**

Store at 4°C. For long term storage store at -20°C.  
Aliquot to avoid repeated freezing and thawing.

**Note**

This product contains sodium azide: a POISONOUS AND HAZARDOUS SUBSTANCE which should be handled by trained staff only.

## Applications

- Immunohistochemistry (Formalin/PFA-fixed paraffin-embedded sections)

Immunohistochemical staining (Formalin-fixed paraffin-embedded sections) of human substantia nigra pars reticulata with SLC32A1 monoclonal antibody, clone CL2793 (Cat # MAB15772) shows positivity in GABAergic neural fibers.

## Gene Info — SLC32A1

**Entrez GeneID**[140679](#)**Protein Accession#**[Q9H598](#)**Gene Name**

SLC32A1

**Gene Alias**

VGAT, VIAAT

**Gene Description**

solute carrier family 32 (GABA vesicular transporter), member 1

**Gene Ontology**[Hyperlink](#)**Gene Summary**

The protein encoded by this gene is an integral membrane protein involved in gamma-aminobutyric acid (GABA) and glycine uptake into synaptic vesicles. The encoded protein is a member of a mono acid/polyamine transporter family II. [provided by RefSeq]

**Other Designations**

GABA and glycine transporter|OTTHUMP00000030977|solute carrier family 32, member 1|vesicular GABA transporter|vesicular inhibitory amino acid transporter

## Disease

- [Disease Models](#)
- [Genetic Predisposition to Disease](#)