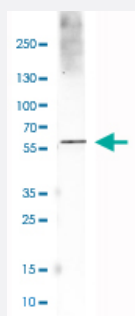


SLC17A7 monoclonal antibody, clone CL2754

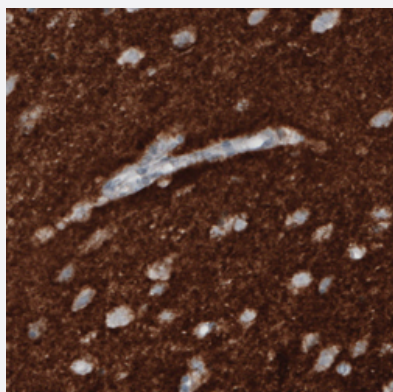
Catalog # MAB15771 Size 100 uL

Applications



Western Blot (Tissue lysate)

Western Blot analysis of human cerebral cortex tissue lysate with SLC17A7 monoclonal antibody, clone CL2754 (Cat # MAB15771).



Immunohistochemistry (Formalin/PFA-fixed paraffin-embedded sections)

Immunohistochemical staining (Formalin-fixed paraffin-embedded sections) of human cerebral cortex with SLC17A7 monoclonal antibody, clone CL2754 (Cat # MAB15771) shows strong immunoreactivity in neuropil.

Specification

Product Description	Mouse monoclonal antibody raised against partial recombinant human SLC17A7.
Immunogen	Recombinant protein corresponding to human SLC17A7.
Epitope	This antibody binds to an epitope located within the peptide sequence EERKYIEDAI as determined by overlapping synthetic peptides.
Sequence	PSISEEERKYIEDAIGESAKLMNPLTKFSTP
Host	Mouse

Reactivity	Human, Mouse, Rat
Form	Liquid
Purification	Protein A purification
Isotype	IgG2b
Recommend Usage	Immunohistochemistry (Formalin/PFA-fixed paraffin-embedded sections) (1:5000-1:10000) Western Blot (1:500-1:1000) The optimal working dilution should be determined by the end user.
Storage Buffer	In PBS, pH 7.2 (40% glycerol, 0.02% sodium azide).
Storage Instruction	Store at 4°C. For long term storage store at -20°C. Aliquot to avoid repeated freezing and thawing.
Note	This product contains sodium azide: a POISONOUS AND HAZARDOUS SUBSTANCE which should be handled by trained staff only.

Applications

- Western Blot (Tissue lysate)

Western Blot analysis of human cerebral cortex tissue lysate with SLC17A7 monoclonal antibody, clone CL2754 (Cat # MAB15771).

- Immunohistochemistry (Formalin/PFA-fixed paraffin-embedded sections)

Immunohistochemical staining (Formalin-fixed paraffin-embedded sections) of human cerebral cortex with SLC17A7 monoclonal antibody, clone CL2754 (Cat # MAB15771) shows strong immunoreactivity in neuropil.

Gene Info — SLC17A7

Entrez GeneID	57030
Protein Accession#	Q9P2U7
Gene Name	SLC17A7
Gene Alias	BNPI, VGLUT1
Gene Description	solute carrier family 17 (sodium-dependent inorganic phosphate cotransporter), member 7
Omim ID	605208
Gene Ontology	Hyperlink

Gene Summary

The protein encoded by this gene is a vesicle-bound, sodium-dependent phosphate transporter that is specifically expressed in the neuron-rich regions of the brain. It is preferentially associated with the membranes of synaptic vesicles and functions in glutamate transport. The protein shares 82 % identity with the differentiation-associated Na-dependent inorganic phosphate cotransporter and they appear to form a distinct class within the Na⁺/Pi cotransporter family. [provided by RefSeq]

Other Designations

brain-specific Na-dependent inorganic phosphate cotransporter|solute carrier family 17, member 7|vesicular glutamate transporter 1

Disease

- [Cognition](#)
- [Genetic Predisposition to Disease](#)
- [Mental Disorders](#)
- [Schizophrenia](#)
- [Schizophrenic Psychology](#)
- [Weight Gain](#)