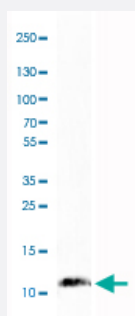


# S100B monoclonal antibody, clone CL2720

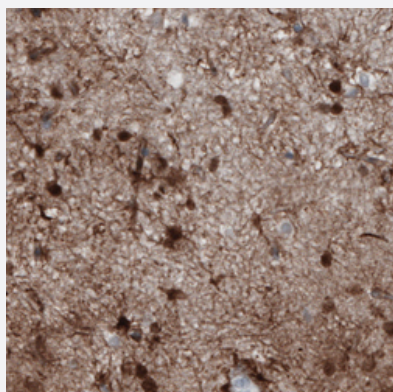
Catalog # MAB15770      Size 100 uL

## Applications



### Western Blot (Tissue lysate)

Western Blot analysis of human cerebral cortex tissue lysate with S100B monoclonal antibody, clone CL2720 (Cat # MAB15770).



### Immunohistochemistry (Formalin/PFA-fixed paraffin-embedded sections)

Immunohistochemical staining (Formalin-fixed paraffin-embedded sections) of human cerebral cortex with S100B monoclonal antibody, clone CL2720 (Cat # MAB15770) shows moderate immunoreactivity in a subset of astrocytes.

## Specification

Product Description	Mouse monoclonal antibody raised against partial recombinant human S100B.
Immunogen	Recombinant protein corresponding to human S100B.
Sequence	LEKAMVALIDVFHQYSGREGDKHKLKKSELKELINNELSHFLEEIKEQEVDKVMETLDNDGDGE CDFQEFMAFVAMVTTACHEFFEHE
Host	Mouse
Reactivity	Human, Mouse, Rat

Form	Liquid
Purification	Protein A purification
Isotype	IgG1
Recommend Usage	Immunohistochemistry (Formalin/PFA-fixed paraffin-embedded sections) (1:500-1:1000) Western Blot (1:500-1:1000) The optimal working dilution should be determined by the end user.
Storage Buffer	In PBS, pH 7.2 (40% glycerol, 0.02% sodium azide).
Storage Instruction	Store at 4°C. For long term storage store at -20°C. Aliquot to avoid repeated freezing and thawing.
Note	This product contains sodium azide: a POISONOUS AND HAZARDOUS SUBSTANCE which should be handled by trained staff only.

## Applications

- Western Blot (Tissue lysate)

Western Blot analysis of human cerebral cortex tissue lysate with S100B monoclonal antibody, clone CL2720 (Cat # MAB15770).

- Immunohistochemistry (Formalin/PFA-fixed paraffin-embedded sections)

Immunohistochemical staining (Formalin-fixed paraffin-embedded sections) of human cerebral cortex with S100B monoclonal antibody, clone CL2720 (Cat # MAB15770) shows moderate immunoreactivity in a subset of astrocytes.

## Gene Info — S100B

Entrez GeneID	<a href="#">6285</a>
Protein Accession#	<a href="#">P04271</a>
Gene Name	S100B
Gene Alias	NEF, S100, S100beta
Gene Description	S100 calcium binding protein B
Omim ID	<a href="#">176990</a>
Gene Ontology	<a href="#">Hyperlink</a>

**Gene Summary**

The protein encoded by this gene is a member of the S100 family of proteins containing 2 EF-hand calcium-binding motifs. S100 proteins are localized in the cytoplasm and/or nucleus of a wide range of cells, and involved in the regulation of a number of cellular processes such as cell cycle progression and differentiation. S100 genes include at least 13 members which are located as a cluster on chromosome 1q21; however, this gene is located at 21q22.3. This protein may function in Neurite extension, proliferation of melanoma cells, stimulation of Ca<sup>2+</sup> fluxes, inhibition of PKC-mediated phosphorylation, astrocytosis and axonal proliferation, and inhibition of microtubule assembly. Chromosomal rearrangements and altered expression of this gene have been implicated in several neurological, neoplastic, and other types of diseases, including Alzheimer's disease, Down's syndrome, epilepsy, amyotrophic lateral sclerosis, melanoma, and type I diabetes. [provided by RefSeq]

**Other Designations**

OTTHUMP00000174958|S-100 calcium-binding protein, beta chain|S100 beta|S100 calcium binding protein, beta (neural)|S100 calcium-binding protein, beta|S100 calcium-binding protein, beta (neural)

**Disease**

- [Alzheimer disease](#)
- [Bipolar Disorder](#)
- [Cognition Disorders](#)
- [Dementia](#)
- [Depressive Disorder](#)
- [Diseases in Twins](#)
- [Genetic Predisposition to Disease](#)
- [Mental Disorders](#)
- [Neuropsychological Tests](#)
- [Psychotic Disorders](#)
- [Schizophrenia](#)