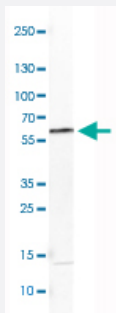


GORASP2 monoclonal antibody, clone CL2610

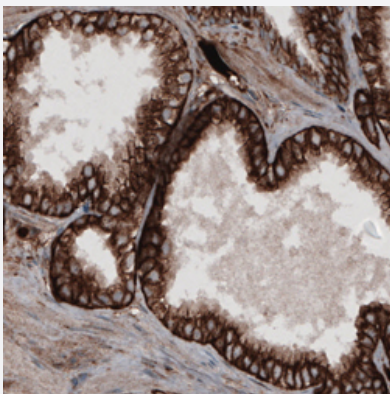
Catalog # MAB15762 Size 100 uL

Applications



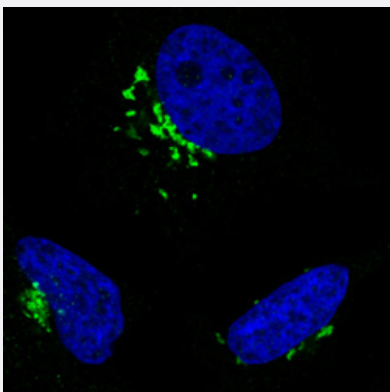
Western Blot (Cell lysate)

Western Blot analysis of U-251 MG cell lysate with GORASP2 monoclonal antibody, clone CL2610 (Cat # MAB15762).



Immunohistochemistry (Formalin/PFA-fixed paraffin-embedded sections)

Immunohistochemical staining (Formalin-fixed paraffin-embedded sections) of human prostate with GORASP2 monoclonal antibody, clone CL2610 (Cat # MAB15762) shows strong cytoplasmic immunoreactivity in glandular cells.



Immunofluorescence

Immunofluorescent staining of HeLa cells with GORASP2 monoclonal antibody, clone CL2610 (Cat # MAB15762) (Green) shows specific the Golgi apparatus. Microtubule and nuclear probes are visualized in red and blue respectively (where available).

Specification

Product Description	Mouse monoclonal antibody raised against partial recombinant human GORASP2.
Immunogen	Recombinant protein corresponding to human GORASP2.
Epitope	This antibody binds to an epitope located within the peptide sequence DAASSLTVDVTPPTA as determined by overlapping synthetic peptides.
Sequence	SGELLSSLPPTSNAPSDPATTTAKADAASSLTVDVTPPTAKAPTTVEDRVGDSTPVSEKPVSAAVDANASESP
Host	Mouse
Reactivity	Human
Form	Liquid
Purification	Protein A purification
Isotype	IgG2b
Recommend Usage	Immunofluorescence (1-4 ug/mL) Immunohistochemistry (Formalin/PFA-fixed paraffin-embedded sections) (1:5000-1:10000) Western Blot (1:500-1:1000) The optimal working dilution should be determined by the end user.
Storage Buffer	In PBS, pH 7.2 (40% glycerol, 0.02% sodium azide).
Storage Instruction	Store at 4°C. For long term storage store at -20°C. Aliquot to avoid repeated freezing and thawing.
Note	This product contains sodium azide: a POISONOUS AND HAZARDOUS SUBSTANCE which should be handled by trained staff only.

Applications

- Western Blot (Cell lysate)

Western Blot analysis of U-251 MG cell lysate with GORASP2 monoclonal antibody, clone CL2610 (Cat # MAB15762).

- Immunohistochemistry (Formalin/PFA-fixed paraffin-embedded sections)

Immunohistochemical staining (Formalin-fixed paraffin-embedded sections) of human prostate with GORASP2 monoclonal antibody, clone CL2610 (Cat # MAB15762) shows strong cytoplasmic immunoreactivity in glandular cells.

- Immunofluorescence

Immunofluorescent staining of HeLa cells with GORASP2 monoclonal antibody, clone CL2610 (Cat # MAB15762) (Green) shows specific the Golgi apparatus. Microtubule and nuclear probes are visualized in red and blue respectively (where available).

Gene Info — GORASP2

Entrez GeneID [26003](#)**Protein Accession#** [Q9H8Y8](#)**Gene Name** GORASP2**Gene Alias** DKFZp434D156, FLJ13139, GOLPH6, GRASP55, GRS2, p59**Gene Description** golgi reassembly stacking protein 2, 55kDa**Omim ID** [608693](#)**Gene Ontology** [Hyperlink](#)

Gene Summary The Golgi complex plays a key role in the sorting and modification of proteins exported from the endoplasmic reticulum. The protein encoded by this gene is involved in establishing the stacked structure of the Golgi apparatus. [provided by RefSeq]

Other Designations golgi reassembly stacking protein 2