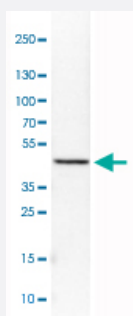


CS monoclonal antibody, clone CL2553

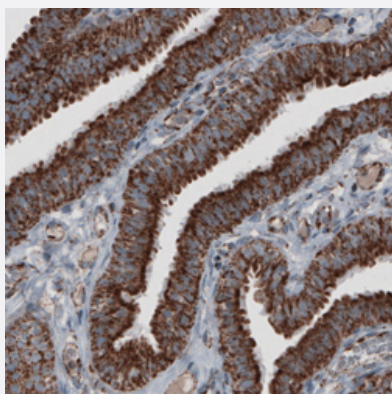
Catalog # MAB15756 Size 100 uL

Applications



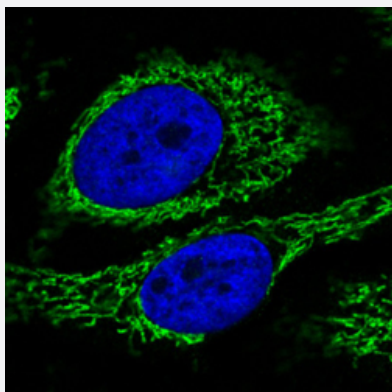
Western Blot (Cell lysate)

Western Blot analysis of U-251 MG cell lysate with CS monoclonal antibody, clone CL2553 (Cat # MAB15756).



Immunohistochemistry (Formalin/PFA-fixed paraffin-embedded sections)

Immunohistochemical staining (Formalin-fixed paraffin-embedded sections) of human fallopian tube with CS monoclonal antibody, clone CL2553 (Cat # MAB15756) shows strong granular cytoplasmic immunoreactivity in glandular cells.



Immunofluorescence

Immunofluorescent staining of HeLa cells with CS monoclonal antibody, clone CL2553 (Cat # MAB15756) (Green) shows specific mitochondrial. Microtubule and nuclear probes are visualized in red and blue respectively (where available).

Specification

Product Description	Mouse monoclonal antibody raised against partial recombinant human CS.
Immunogen	Recombinant protein corresponding to human CS.
Epitope	This antibody binds to an epitope located within the peptide sequence GLFWLLVTGHIPTTEE as determined by overlapping synthetic peptides.
Sequence	ADLIPKEQARIKTRQQHGKTVVGQITVDMMYGGMRGMKGLVYETSVLDPDEGIRFRGFSIPECQKLLPKAKGGEEPLPEGLFWLLVTGHIPTTEEQVSWL
Host	Mouse
Reactivity	Human
Form	Liquid
Purification	Protein A purification
Isotype	IgG1
Recommend Usage	Immunofluorescence (1-4 ug/mL) Immunohistochemistry (Formalin/PFA-fixed paraffin-embedded sections) (1:1000-1:2500) Western Blot (1:500-1:1000) The optimal working dilution should be determined by the end user.
Storage Buffer	In PBS, pH 7.2 (40% glycerol, 0.02% sodium azide).
Storage Instruction	Store at 4°C. For long term storage store at -20°C. Aliquot to avoid repeated freezing and thawing.
Note	This product contains sodium azide: a POISONOUS AND HAZARDOUS SUBSTANCE which should be handled by trained staff only.

Applications

- Western Blot (Cell lysate)

Western Blot analysis of U-251 MG cell lysate with CS monoclonal antibody, clone CL2553 (Cat # MAB15756).

- Immunohistochemistry (Formalin/PFA-fixed paraffin-embedded sections)

Immunohistochemical staining (Formalin-fixed paraffin-embedded sections) of human fallopian tube with CS monoclonal antibody, clone CL2553 (Cat # MAB15756) shows strong granular cytoplasmic immunoreactivity in glandular cells.

- Immunofluorescence

Immunofluorescent staining of HeLa cells with CS monoclonal antibody, clone CL2553 (Cat # MAB15756) (Green) shows specific mitochondrial. Microtubule and nuclear probes are visualized in red and blue respectively (where available).

Gene Info — CS

Entrez GeneID [1431](#)**Protein Accession#** [O75390](#)**Gene Name** CS**Gene Alias** -**Gene Description** citrate synthase**Omim ID** [118950](#)**Gene Ontology** [Hyperlink](#)

Gene Summary The protein encoded by this gene is a Krebs tricarboxylic acid cycle enzyme that catalyzes the synthesis of citrate from oxaloacetate and acetyl coenzyme A. The enzyme is found in nearly all cells capable of oxidative metabolism. This protein is nuclear encoded and transported into the mitochondrial matrix, where the mature form is found. [provided by RefSeq]

Other Designations citrate synthase, mitochondrial

Pathway

- [Biosynthesis of alkaloids derived from histidine and purine](#)
- [Biosynthesis of alkaloids derived from ornithine](#)
- [Biosynthesis of alkaloids derived from shikimate pathway](#)
- [Biosynthesis of alkaloids derived from terpenoid and polyketide](#)
- [Biosynthesis of phenylpropanoids](#)
- [Biosynthesis of plant hormones](#)
- [Biosynthesis of terpenoids and steroids](#)
- [Citrate cycle \(TCA cycle\)](#)
- [Glyoxylate and dicarboxylate metabolism](#)
- [Metabolic pathways](#)

Disease

- [Infertility](#)