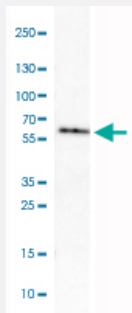


GORASP2 monoclonal antibody, clone CL2522

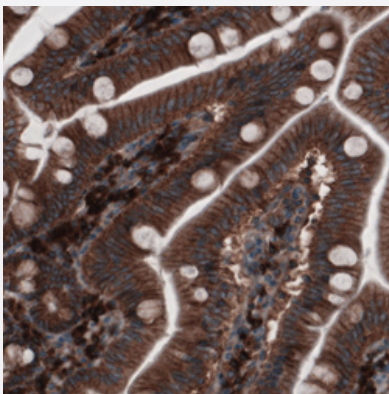
Catalog # MAB15752 Size 100 uL

Applications



Western Blot (Cell lysate)

Western Blot analysis of U-251 MG cell lysate with GORASP2 monoclonal antibody, clone CL2522 (Cat # MAB15752).



Immunohistochemistry (Formalin/PFA-fixed paraffin-embedded sections)

Immunohistochemical staining (Formalin-fixed paraffin-embedded sections) of human small intestine with GORASP2 monoclonal antibody, clone CL2522 (Cat # MAB15752) shows cytoplasmic and membranous immunoreactivity in glandular epithelium and lamina propria cells.

Specification

Product Description	Mouse monoclonal antibody raised against partial recombinant human GORASP2.
Immunogen	Recombinant protein corresponding to human GORASP2.
Sequence	PTRPFEEGKKISLPGQMAGTPIPLKDGFTVQLSSVNPPSLSPPGTTGIEQSLTGLSISSTPPAVS SVLSTGV
Host	Mouse
Reactivity	Human

Form	Liquid
Purification	Protein A purification
Isotype	IgG1
Recommend Usage	Immunohistochemistry (Formalin/PFA-fixed paraffin-embedded sections) (1:5000-1:10000) Western Blot (1:500-1:1000) The optimal working dilution should be determined by the end user.
Storage Buffer	In PBS, pH 7.2 (40% glycerol, 0.02% sodium azide).
Storage Instruction	Store at 4°C. For long term storage store at -20°C. Aliquot to avoid repeated freezing and thawing.
Note	This product contains sodium azide: a POISONOUS AND HAZARDOUS SUBSTANCE which should be handled by trained staff only.

Applications

- Western Blot (Cell lysate)

Western Blot analysis of U-251 MG cell lysate with GORASP2 monoclonal antibody, clone CL2522 (Cat # MAB15752).

- Immunohistochemistry (Formalin/PFA-fixed paraffin-embedded sections)

Immunohistochemical staining (Formalin-fixed paraffin-embedded sections) of human small intestine with GORASP2 monoclonal antibody, clone CL2522 (Cat # MAB15752) shows cytoplasmic and membranous immunoreactivity in glandular epithelium and lamina propria cells.

Gene Info — GORASP2

Entrez GeneID	26003
Protein Accession#	Q9H8Y8
Gene Name	GORASP2
Gene Alias	DKFZp434D156, FLJ13139, GOLPH6, GRASP55, GRS2, p59
Gene Description	golgi reassembly stacking protein 2, 55kDa
Omim ID	608693
Gene Ontology	Hyperlink

Gene Summary

The Golgi complex plays a key role in the sorting and modification of proteins exported from the endoplasmic reticulum. The protein encoded by this gene is involved in establishing the stacked structure of the Golgi apparatus. [provided by RefSeq]

Other Designations

golgi reassembly stacking protein 2