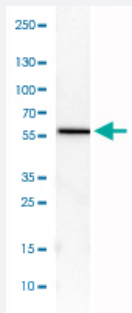


PDIA3 monoclonal antibody, clone CL2452

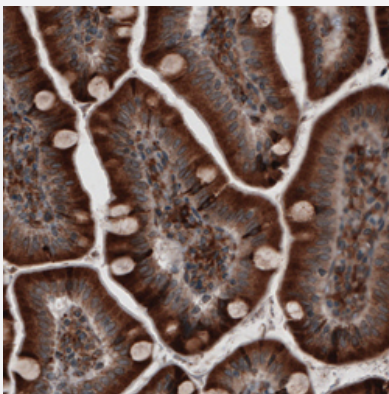
Catalog # MAB15750 Size 100 uL

Applications



Western Blot (Cell lysate)

Western Blot analysis of U-251 MG cell lysate with PDIA3 monoclonal antibody, clone CL2452 (Cat # MAB15750).



Immunohistochemistry (Formalin/PFA-fixed paraffin-embedded sections)

Immunohistochemical staining (Formalin-fixed paraffin-embedded sections) of human small intestine with PDIA3 monoclonal antibody, clone CL2452 (Cat # MAB15750) shows strong cytoplasmic immunoreactivity in glandular epithelium and lamina propria cells.

Specification

Product Description	Mouse monoclonal antibody raised against partial recombinant human PDIA3.
Immunogen	Recombinant protein corresponding to human PDIA3.
Epitope	This antibody binds to an epitope located within the peptide sequence PTLKIFRDGEEAGAY as determined by overlapping synthetic peptides.
Sequence	PTLKIFRDGEEAGAYDGPRTADGMVSHLKKQAGPASVPLRTEEEFKKFISDKDASIVGFFDDSFSEAHSEFLKAASNLRDNYRFAHTNVESLVNEYDDNGEGILFRPSHLTNKFEDK
Host	Mouse

Reactivity	Human
Form	Liquid
Purification	Protein A purification
Isotype	IgG2b
Recommend Usage	Immunohistochemistry (Formalin/PFA-fixed paraffin-embedded sections) (1:5000-1:10000) Western Blot (1:500-1:1000) The optimal working dilution should be determined by the end user.
Storage Buffer	In PBS, pH 7.2 (40% glycerol, 0.02% sodium azide).
Storage Instruction	Store at 4°C. For long term storage store at -20°C. Aliquot to avoid repeated freezing and thawing.
Note	This product contains sodium azide: a POISONOUS AND HAZARDOUS SUBSTANCE which should be handled by trained staff only.

Applications

- Western Blot (Cell lysate)

Western Blot analysis of U-251 MG cell lysate with PDIA3 monoclonal antibody, clone CL2452 (Cat # MAB15750).

- Immunohistochemistry (Formalin/PFA-fixed paraffin-embedded sections)

Immunohistochemical staining (Formalin-fixed paraffin-embedded sections) of human small intestine with PDIA3 monoclonal antibody, clone CL2452 (Cat # MAB15750) shows strong cytoplasmic immunoreactivity in glandular epithelium and lamina propria cells.

Gene Info — PDIA3

Entrez GeneID	2923
Protein Accession#	P30101
Gene Name	PDIA3
Gene Alias	ER60, ERp57, ERp60, ERp61, GRP57, GRP58, HsT17083, P58, PI-PLC
Gene Description	protein disulfide isomerase family A, member 3
Omim ID	602046
Gene Ontology	Hyperlink

Gene Summary

This gene encodes a protein of the endoplasmic reticulum that interacts with lectin chaperones calreticulin and calnexin to modulate folding of newly synthesized glycoproteins. The protein was once thought to be a phospholipase; however, it has been demonstrated that the protein actually has protein disulfide isomerase activity. It is thought that complexes of lectins and this protein mediate protein folding by promoting formation of disulfide bonds in their glycoprotein substrates. [provided by RefSeq]

Other Designations

58 kDa microsomal protein|OTTHUMP00000041709|endoplasmic reticulum P58|glucose regulated protein, 58kDa|phospholipase C-alpha|protein disulfide isomerase-associated 3|protein disulfide isomerase A3

Pathway

- [Antigen processing and presentation](#)

Disease

- [Genetic Predisposition to Disease](#)
- [Prostatic Neoplasms](#)