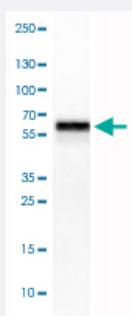


PDIA3 monoclonal antibody, clone CL2444

Catalog # MAB15748

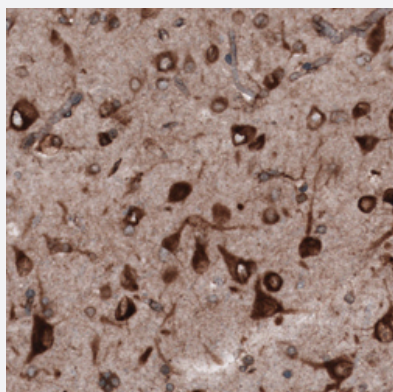
Size 100 uL

Applications



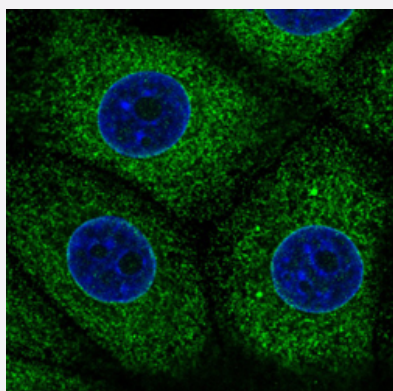
Western Blot (Cell lysate)

Western Blot analysis of U-251 MG cell lysate with PDIA3 monoclonal antibody, clone CL2444 (Cat # MAB15748).



Immunohistochemistry (Formalin/PFA-fixed paraffin-embedded sections)

Immunohistochemical staining (Formalin-fixed paraffin-embedded sections) of human cerebral cortex with PDIA3 monoclonal antibody, clone CL2444 (Cat # MAB15748) shows strong cytoplasmic immunoreactivity in neurons.



Immunofluorescence

Immunofluorescent staining of MCF7 cells with PDIA3 monoclonal antibody, clone CL2444 (Cat # MAB15748) (Green) shows specific endoplasmic reticulum. Microtubule and nuclear probes are visualized in red and blue respectively (where available).

Specification

Product Description	Mouse monoclonal antibody raised against partial recombinant human PDIA3.
Immunogen	Recombinant protein corresponding to human PDIA3.
Epitope	This antibody binds to an epitope located within the peptide sequence KKFISDKDASIVGFF as determined by overlapping synthetic peptides.
Sequence	PTLKIFRDGEEAGAYDGPRTADGM/SHLKKQAGPASVPLRTEEEFKKFISDKDASIVGFFDDSFSE AHSEFLKAASNLRDNYRFAHTNVESLVNEYDDNGEGIILFRPSHLTNKFEDK
Host	Mouse
Reactivity	Human
Form	Liquid
Purification	Protein A purification
Isotype	IgG1
Recommend Usage	Immunofluorescence (1-4 ug/mL) Immunohistochemistry (Formalin/PFA-fixed paraffin-embedded sections) (1:5000-1:10000) Western Blot (1:500-1:1000) The optimal working dilution should be determined by the end user.
Storage Buffer	In PBS, pH 7.2 (40% glycerol, 0.02% sodium azide).
Storage Instruction	Store at 4°C. For long term storage store at -20°C. Aliquot to avoid repeated freezing and thawing.
Note	This product contains sodium azide: a POISONOUS AND HAZARDOUS SUBSTANCE which should be handled by trained staff only.

Applications

- Western Blot (Cell lysate)

Western Blot analysis of U-251 MG cell lysate with PDIA3 monoclonal antibody, clone CL2444 (Cat # MAB15748).

- Immunohistochemistry (Formalin/PFA-fixed paraffin-embedded sections)

Immunohistochemical staining (Formalin-fixed paraffin-embedded sections) of human cerebral cortex with PDIA3 monoclonal antibody, clone CL2444 (Cat # MAB15748) shows strong cytoplasmic immunoreactivity in neurons.

- Immunofluorescence

Immunofluorescent staining of MCF7 cells with PDIA3 monoclonal antibody, clone CL2444 (Cat # MAB15748) (Green) shows specific endoplasmic reticulum. Microtubule and nuclear probes are visualized in red and blue respectively (where available).

Gene Info — PDIA3

Entrez GeneID	2923
Protein Accession#	P30101
Gene Name	PDIA3
Gene Alias	ER60, ERp57, ERp60, ERp61, GRP57, GRP58, HsT17083, P58, PI-PLC
Gene Description	protein disulfide isomerase family A, member 3
Omim ID	602046
Gene Ontology	Hyperlink
Gene Summary	This gene encodes a protein of the endoplasmic reticulum that interacts with lectin chaperones calreticulin and calnexin to modulate folding of newly synthesized glycoproteins. The protein was once thought to be a phospholipase; however, it has been demonstrated that the protein actually has protein disulfide isomerase activity. It is thought that complexes of lectins and this protein mediate protein folding by promoting formation of disulfide bonds in their glycoprotein substrates. [provided by RefSeq]
Other Designations	58 kDa microsomal protein OTTHUMP00000041709 endoplasmic reticulum P58 glucose regulated protein, 58kDa phospholipase C-alpha protein disulfide isomerase-associated 3 protein disulfide isomerase A3

Pathway

- [Antigen processing and presentation](#)

Disease

- [Genetic Predisposition to Disease](#)
- [Prostatic Neoplasms](#)