

# LY6K monoclonal antibody, clone CL2433

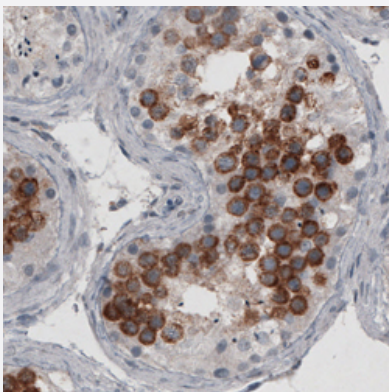
Catalog # MAB15746      Size 100 uL

## Applications



### Western Blot (Tissue lysate)

Western Blot analysis of human testis tissue lysate with LY6K monoclonal antibody, clone CL2433 (Cat # MAB15746).



### Immunohistochemistry (Formalin/PFA-fixed paraffin-embedded sections)

Immunohistochemical staining (Formalin-fixed paraffin-embedded sections) of human testis with LY6K monoclonal antibody, clone CL2433 (Cat # MAB15746) shows strong cytoplasmic immunoreactivity in a subset of cells in seminiferous tubules.

## Specification

<b>Product Description</b>	Mouse monoclonal antibody raised against partial recombinant human LY6K.
<b>Immunogen</b>	Recombinant protein corresponding to human LY6K.
<b>Epitope</b>	This antibody binds to an epitope located within the peptide sequence LEEPMPFFYLKCKKI as determined by overlapping synthetic peptides.
<b>Sequence</b>	TDEGDNRVWCHVCERENTFECQNP RRCKWTEPYCVIAAVKIFPRFFMVAKQCSAGCAAMERPK PEEKRFLL EEPMPFFYLKCKKIRYCNLEGPPINSSVFKEYAG
<b>Host</b>	Mouse

Reactivity	Human
Form	Liquid
Purification	Protein A purification
Isotype	IgG1
Recommend Usage	Immunohistochemistry (Formalin/PFA-fixed paraffin-embedded sections) (1:200-1:500) Western Blot (1:100-1:250) The optimal working dilution should be determined by the end user.
Storage Buffer	In PBS, pH 7.2 (40% glycerol, 0.02% sodium azide).
Storage Instruction	Store at 4°C. For long term storage store at -20°C. Aliquot to avoid repeated freezing and thawing.
Note	This product contains sodium azide: a POISONOUS AND HAZARDOUS SUBSTANCE which should be handled by trained staff only.

## Applications

- Western Blot (Tissue lysate)

Western Blot analysis of human testis tissue lysate with LY6K monoclonal antibody, clone CL2433 (Cat # MAB15746).

- Immunohistochemistry (Formalin/PFA-fixed paraffin-embedded sections)

Immunohistochemical staining (Formalin-fixed paraffin-embedded sections) of human testis with LY6K monoclonal antibody, clone CL2433 (Cat # MAB15746) shows strong cytoplasmic immunoreactivity in a subset of cells in seminiferous tubules.

## Gene Info — LY6K

Entrez GeneID	<a href="#">54742</a>
Protein Accession#	<a href="#">Q17RY6</a>
Gene Name	LY6K
Gene Alias	FLJ35226, HSJ001348
Gene Description	lymphocyte antigen 6 complex, locus K
Gene Ontology	<a href="#">Hyperlink</a>
Gene Summary	O
Other Designations	-