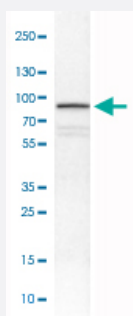


EZR monoclonal antibody, clone CL2384

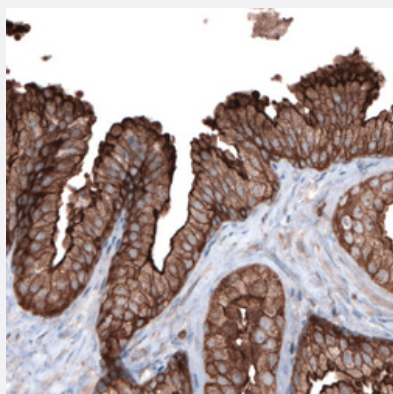
Catalog # MAB15743 Size 100 uL

Applications



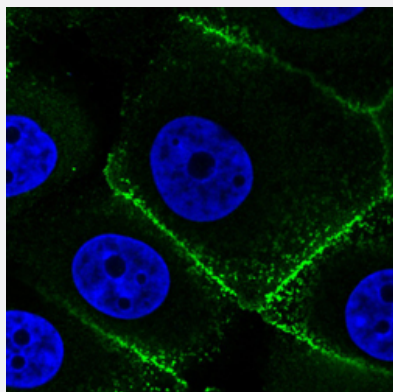
Western Blot (Cell lysate)

Western Blot analysis of U-251 MG cell lysate with EZR monoclonal antibody, clone CL2384 (Cat # MAB15743).



Immunohistochemistry (Formalin/PFA-fixed paraffin-embedded sections)

Immunohistochemical staining (Formalin-fixed paraffin-embedded sections) of human prostate cancer with EZR monoclonal antibody, clone CL2384 (Cat # MAB15743) shows strong membranous and moderate cytoplasmic positivity in glandular cells.



Immunofluorescence

Immunofluorescent staining of MCF7 cells with EZR monoclonal antibody, clone CL2384 (Cat # MAB15743) (Green) shows specific plasma membrane. Microtubule and nuclear probes are visualized in red and blue respectively (where available).

Specification

Product Description	Mouse monoclonal antibody raised against partial recombinant human EZR.
Immunogen	Recombinant protein corresponding to human EZR.
Epitope	This antibody binds to an epitope located within the peptide sequence LSEQIQRALQLEEEER as determined by overlapping synthetic peptides.
Sequence	REEKHQKQLERQQLETEKKRRETVEREKEQMMREKEELMLRLQDYEEKTKKAERELSEQIQRALQLEEEERKRAQEEAERLEADRMAALRAKEELERQAVDQIKSQEQLAAELAEYTAKIALLE
Host	Mouse
Reactivity	Human
Form	Liquid
Purification	Protein A purification
Isotype	IgG1
Recommend Usage	Immunofluorescence (1-4 ug/mL) Immunohistochemistry (Formalin/PFA-fixed paraffin-embedded sections) (1:5000-1:10000) Western Blot (1:500-1:1000) The optimal working dilution should be determined by the end user.
Storage Buffer	In PBS, pH 7.2 (40% glycerol, 0.02% sodium azide).
Storage Instruction	Store at 4°C. For long term storage store at -20°C. Aliquot to avoid repeated freezing and thawing.
Note	This product contains sodium azide: a POISONOUS AND HAZARDOUS SUBSTANCE which should be handled by trained staff only.

Applications

- Western Blot (Cell lysate)

Western Blot analysis of U-251 MG cell lysate with EZR monoclonal antibody, clone CL2384 (Cat # MAB15743).

- Immunohistochemistry (Formalin/PFA-fixed paraffin-embedded sections)

Immunohistochemical staining (Formalin-fixed paraffin-embedded sections) of human prostate cancer with EZR monoclonal antibody, clone CL2384 (Cat # MAB15743) shows strong membranous and moderate cytoplasmic positivity in glandular cells.

- Immunofluorescence

Immunofluorescent staining of MCF7 cells with EZR monoclonal antibody, clone CL2384 (Cat # MAB15743) (Green) shows specific plasma membrane. Microtubule and nuclear probes are visualized in red and blue respectively (where available).

Gene Info — EZR

Entrez GeneID	7430
Protein Accession#	P15311
Gene Name	EZR
Gene Alias	CVIL, CVL, DKFZp762H157, FLJ26216, MGC1584, VIL2
Gene Description	ezrin
Omim ID	123900
Gene Ontology	Hyperlink
Gene Summary	The cytoplasmic peripheral membrane protein encoded by this gene functions as a protein-tyrosine kinase substrate in microvilli. As a member of the ERM protein family, this protein serves as an intermediate between the plasma membrane and the actin cytoskeleton. This protein plays a key role in cell surface structure adhesion, migration and organization, and it has been implicated in various human cancers. A pseudogene located on chromosome 3 has been identified for this gene. Alternatively spliced variants have also been described for this gene. [provided by RefSeq]
Other Designations	OTTHUMP00000017506 OTTHUMP00000017507 cytovillin 2 villin 2 (ezrin)

Pathway

- [Leukocyte transendothelial migration](#)
- [Pathogenic Escherichia coli infection - EHEC](#)
- [Regulation of actin cytoskeleton](#)

Disease

- [Asthma](#)
- [Cardiovascular Diseases](#)
- [Diabetes Mellitus](#)
- [Edema](#)
- [Genetic Predisposition to Disease](#)
- [Hypersensitivity](#)

- [Lung Neoplasms](#)
- [Ovarian Neoplasms](#)
- [Pulmonary Disease](#)
- [Tobacco Use Disorder](#)
- [Urinary Bladder Neoplasms](#)
- [Werner syndrome](#)