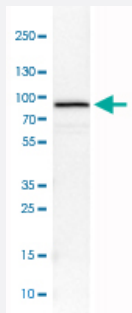


EZR monoclonal antibody, clone CL2375

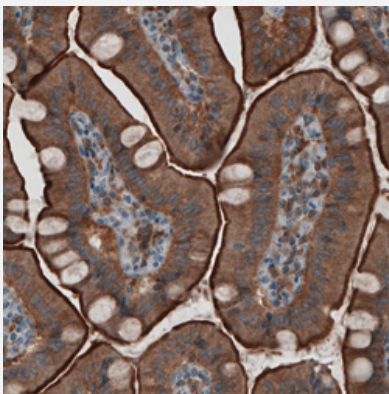
Catalog # MAB15742 Size 100 uL

Applications



Western Blot (Cell lysate)

Western Blot analysis of U-251 MG cell lysate with EZR monoclonal antibody, clone CL2375 (Cat # MAB15742).



Immunohistochemistry (Formalin/PFA-fixed paraffin-embedded sections)

Immunohistochemical staining (Formalin-fixed paraffin-embedded sections) of human small intestine with EZR monoclonal antibody, clone CL2375 (Cat # MAB15742) shows strong membranous combined with moderate cytoplasmic immunoreactivity in glandular epithelium cells.

Specification

Product Description	Mouse monoclonal antibody raised against partial recombinant human EZR.
Immunogen	Recombinant protein corresponding to human EZR.
Epitope	This antibody binds to an epitope located within the peptide sequence KAERELSEQIQRALQ as determined by overlapping synthetic peptides.
Sequence	REEKHQKQLERQQLETEKKRRETVEREKEQMMREKEELMLRLQDYEEKTKKAERELSEQIQRALQLEERKRAQEEAERLEADRMAALRAKEELERQAVDQIKSQEQLAAELA EYTAKIALLE
Host	Mouse

Reactivity	Human
Form	Liquid
Purification	Protein A purification
Isotype	IgG1
Recommend Usage	Immunohistochemistry (Formalin/PFA-fixed paraffin-embedded sections) (1:5000-1:10000) Western Blot (1:500-1:1000) The optimal working dilution should be determined by the end user.
Storage Buffer	In PBS, pH 7.2 (40% glycerol, 0.02% sodium azide).
Storage Instruction	Store at 4°C. For long term storage store at -20°C. Aliquot to avoid repeated freezing and thawing.
Note	This product contains sodium azide: a POISONOUS AND HAZARDOUS SUBSTANCE which should be handled by trained staff only.

Applications

- Western Blot (Cell lysate)

Western Blot analysis of U-251 MG cell lysate with EZR monoclonal antibody, clone CL2375 (Cat # MAB15742).

- Immunohistochemistry (Formalin/PFA-fixed paraffin-embedded sections)

Immunohistochemical staining (Formalin-fixed paraffin-embedded sections) of human small intestine with EZR monoclonal antibody, clone CL2375 (Cat # MAB15742) shows strong membranous combined with moderate cytoplasmic immunoreactivity in glandular epithelium cells.

Gene Info — EZR

Entrez GeneID	7430
Protein Accession#	P15311
Gene Name	EZR
Gene Alias	CVIL, CVL, DKFZp762H157, FLJ26216, MGC1584, VIL2
Gene Description	ezrin
Omim ID	123900
Gene Ontology	Hyperlink

Gene Summary

The cytoplasmic peripheral membrane protein encoded by this gene functions as a protein-tyrosine kinase substrate in microvilli. As a member of the ERM protein family, this protein serves as an intermediate between the plasma membrane and the actin cytoskeleton. This protein plays a key role in cell surface structure adhesion, migration and organization, and it has been implicated in various human cancers. A pseudogene located on chromosome 3 has been identified for this gene. Alternatively spliced variants have also been described for this gene. [provided by RefSeq]

Other Designations

OTTHUMP00000017506|OTTHUMP00000017507|cytovillin 2|villin 2 (ezrin)

Pathway

- [Leukocyte transendothelial migration](#)
- [Pathogenic Escherichia coli infection - EHEC](#)
- [Regulation of actin cytoskeleton](#)

Disease

- [Asthma](#)
- [Cardiovascular Diseases](#)
- [Diabetes Mellitus](#)
- [Edema](#)
- [Genetic Predisposition to Disease](#)
- [Hypersensitivity](#)
- [Lung Neoplasms](#)
- [Ovarian Neoplasms](#)
- [Pulmonary Disease](#)
- [Tobacco Use Disorder](#)
- [Urinary Bladder Neoplasms](#)
- [Werner syndrome](#)