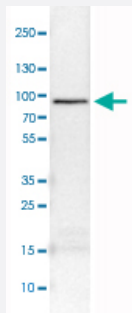


# CARS monoclonal antibody, clone CL2310

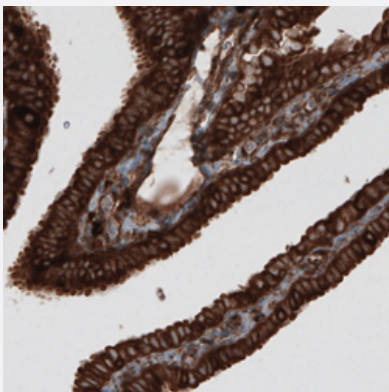
Catalog # MAB15741      Size 100 uL

## Applications



### Western Blot (Cell lysate)

Western Blot analysis of U-251 MG cell lysate with CARS monoclonal antibody, clone CL2310 (Cat # MAB15741).



### Immunohistochemistry (Formalin/PFA-fixed paraffin-embedded sections)

Immunohistochemical staining (Formalin-fixed paraffin-embedded sections) of human fallopian tube with CARS monoclonal antibody, clone CL2310 (Cat # MAB15741) shows strong cytoplasmic immunoreactivity in glandular epithelium cells.

## Specification

<b>Product Description</b>	Mouse monoclonal antibody raised against partial recombinant human CARS.
<b>Immunogen</b>	Recombinant protein corresponding to human CARS.
<b>Epitope</b>	This antibody binds to an epitope located within the peptide sequence EDSSLGFPVG as determined by overlapping synthetic peptides.
<b>Sequence</b>	SQCPLYMAARKAVRKRPNQALLENIALYLTHMLKIFGAVEEDSSLGFPVGGPGTSLSEATVMPYLQVLSEFREGVRKIAREQKVPEILQLSDALRDNILPELGVRFEDHEGLPTVVKLVDRNTLLKEREKRRVE

Host	Mouse
Reactivity	Human
Form	Liquid
Purification	Protein A purification
Isotype	IgG1
Recommend Usage	Immunohistochemistry (Formalin/PFA-fixed paraffin-embedded sections) (1:1000-1:2500) Western Blot (1:500-1:1000) The optimal working dilution should be determined by the end user.
Storage Buffer	In PBS, pH 7.2 (40% glycerol, 0.02% sodium azide).
Storage Instruction	Store at 4°C. For long term storage store at -20°C. Aliquot to avoid repeated freezing and thawing.
Note	This product contains sodium azide: a POISONOUS AND HAZARDOUS SUBSTANCE which should be handled by trained staff only.

## Applications

- Western Blot (Cell lysate)

Western Blot analysis of U-251 MG cell lysate with CARS monoclonal antibody, clone CL2310 (Cat # MAB15741).

- Immunohistochemistry (Formalin/PFA-fixed paraffin-embedded sections)

Immunohistochemical staining (Formalin-fixed paraffin-embedded sections) of human fallopian tube with CARS monoclonal antibody, clone CL2310 (Cat # MAB15741) shows strong cytoplasmic immunoreactivity in glandular epithelium cells.

## Gene Info — CARS

Entrez GeneID	<a href="#">833</a>
Protein Accession#	<a href="#">A8MVQ3</a>
Gene Name	CARS
Gene Alias	CARS1, CYSRS, MGC:11246
Gene Description	cysteinyI-tRNA synthetase
Omim ID	<a href="#">123859</a>
Gene Ontology	<a href="#">Hyperlink</a>

**Gene Summary**

This gene encodes a class 1 aminoacyl-tRNA synthetase, cysteinyl-tRNA synthetase. Each of the twenty aminoacyl-tRNA synthetases catalyzes the aminoacylation of a specific tRNA or tRNA isoaccepting family with the cognate amino acid. This gene is one of several located near the imprinted gene domain of 11p15.5, an important tumor-suppressor gene region. Alterations in this region have been associated with the Beckwith-Wiedemann syndrome, Wilms tumor, rhabdomyosarcoma, adrenocortical carcinoma, and lung, ovarian, and breast cancer. Alternative splicing of this gene results in multiple transcript variants encoding distinct isoforms. [provided by RefSeq]

**Other Designations**

OTTHUMP00000012605|cysteine tRNA ligase 1, cytoplasmic|cysteine translocase|cysteine-tRNA ligase

**Pathway**

- [Aminoacyl-tRNA biosynthesis](#)

**Disease**

- [Diabetes Mellitus](#)
- [Diabetic Nephropathies](#)
- [Genetic Predisposition to Disease](#)
- [Kidney Failure](#)
- [Proteinuria](#)