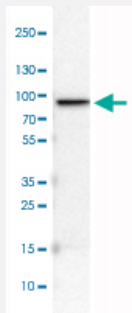


CARS monoclonal antibody, clone CL2302

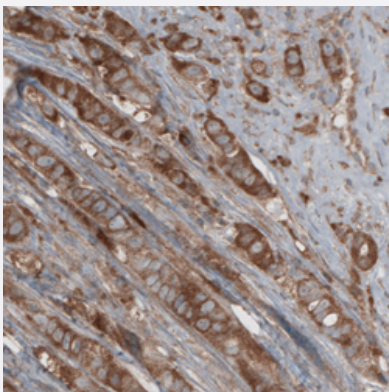
Catalog # MAB15738 Size 100 uL

Applications



Western Blot (Cell lysate)

Western Blot analysis of U-251 MG cell lysate with CARS monoclonal antibody, clone CL2302 (Cat # MAB15738).



Immunohistochemistry (Formalin/PFA-fixed paraffin-embedded sections)

Immunohistochemical staining (Formalin-fixed paraffin-embedded sections) of human breast cancer with CARS monoclonal antibody, clone CL2302 (Cat # MAB15738) shows cytoplasmic immunoreactivity in tumor cells.

Specification

Product Description	Mouse monoclonal antibody raised against partial recombinant human CARS.
Immunogen	Recombinant protein corresponding to human CARS.
Epitope	This antibody binds to an epitope located within the peptide sequence RPNQALLENIALYLT as determined by overlapping synthetic peptides.
Sequence	SQCNL YMAARKAVRKRPNQALLENIALYLTHMLKIFGAVEEDSSLGFPVGGPGTSLSEATVMPYL QVLSEFREGVRKIAREQKVPEILQLSDALRDNILPELGVRFEDHEGLPTVVKLVDRNTLLKEREK RRVE

Host	Mouse
Reactivity	Human
Form	Liquid
Purification	Protein A purification
Isotype	IgG1
Recommend Usage	Immunohistochemistry (Formalin/PFA-fixed paraffin-embedded sections) (1:1000-1:2500) Western Blot (1:500-1:1000) The optimal working dilution should be determined by the end user.
Storage Buffer	In PBS, pH 7.2 (40% glycerol, 0.02% sodium azide).
Storage Instruction	Store at 4°C. For long term storage store at -20°C. Aliquot to avoid repeated freezing and thawing.
Note	This product contains sodium azide: a POISONOUS AND HAZARDOUS SUBSTANCE which should be handled by trained staff only.

Applications

- Western Blot (Cell lysate)

Western Blot analysis of U-251 MG cell lysate with CARS monoclonal antibody, clone CL2302 (Cat # MAB15738).

- Immunohistochemistry (Formalin/PFA-fixed paraffin-embedded sections)

Immunohistochemical staining (Formalin-fixed paraffin-embedded sections) of human breast cancer with CARS monoclonal antibody, clone CL2302 (Cat # MAB15738) shows cytoplasmic immunoreactivity in tumor cells.

Gene Info — CARS

Entrez GeneID	833
Protein Accession#	A8MVQ3
Gene Name	CARS
Gene Alias	CARS1, CYSRS, MGC:11246
Gene Description	cysteinyI-tRNA synthetase
Omim ID	123859
Gene Ontology	Hyperlink

Gene Summary

This gene encodes a class 1 aminoacyl-tRNA synthetase, cysteinyl-tRNA synthetase. Each of the twenty aminoacyl-tRNA synthetases catalyzes the aminoacylation of a specific tRNA or tRNA isoaccepting family with the cognate amino acid. This gene is one of several located near the imprinted gene domain of 11p15.5, an important tumor-suppressor gene region. Alterations in this region have been associated with the Beckwith-Wiedemann syndrome, Wilms tumor, rhabdomyosarcoma, adrenocortical carcinoma, and lung, ovarian, and breast cancer. Alternative splicing of this gene results in multiple transcript variants encoding distinct isoforms. [provided by RefSeq]

Other Designations

OTTHUMP00000012605|cysteine tRNA ligase 1, cytoplasmic|cysteine translocase|cysteine-tRNA ligase

Pathway

- [Aminoacyl-tRNA biosynthesis](#)

Disease

- [Diabetes Mellitus](#)
- [Diabetic Nephropathies](#)
- [Genetic Predisposition to Disease](#)
- [Kidney Failure](#)
- [Proteinuria](#)