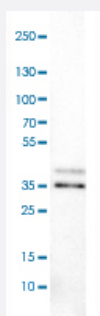


VPS26A monoclonal antibody, clone CL2287

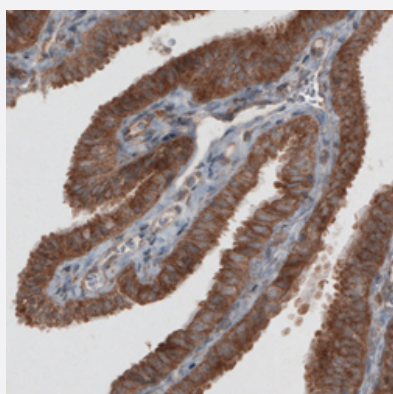
Catalog # MAB15737 Size 100 uL

Applications



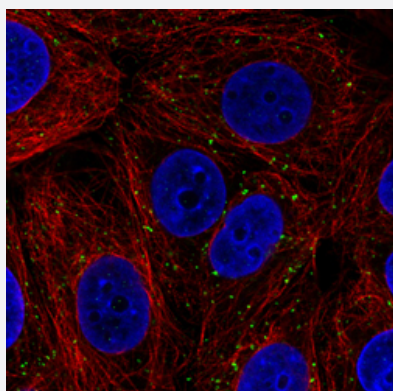
Western Blot (Cell lysate)

Western Blot analysis of U-251 MG cell lysate with VPS26A monoclonal antibody, clone CL2287 (Cat # MAB15737).



Immunohistochemistry (Formalin/PFA-fixed paraffin-embedded sections)

Immunohistochemical staining (Formalin-fixed paraffin-embedded sections) of human fallopian tube with VPS26A monoclonal antibody, clone CL2287 (Cat # MAB15737) shows strong granular cytoplasmic immunoreactivity in glandular epithelium cells.



Immunofluorescence

Immunofluorescent staining of MCF7 cells with VPS26A monoclonal antibody, clone CL2287 (Cat # MAB15737) (Green) shows distinct endosomes. Microtubule and nuclear probes are visualized in red and blue respectively (where available).

Specification

Product Description	Mouse monoclonal antibody raised against partial recombinant human VPS26A.
Immunogen	Recombinant protein corresponding to human VPS26A.
Sequence	LRKQRTNHFHQRFESPESQASAEQPEM
Host	Mouse
Reactivity	Human
Form	Liquid
Purification	Protein A purification
Isotype	IgG1
Recommend Usage	Immunofluorescence (1-4 ug/mL) Immunohistochemistry (Formalin/PFA-fixed paraffin-embedded sections) (1:200-1:500) Western Blot (1:200-1:500) The optimal working dilution should be determined by the end user.
Storage Buffer	In PBS, pH 7.2 (40% glycerol, 0.02% sodium azide).
Storage Instruction	Store at 4°C. For long term storage store at -20°C. Aliquot to avoid repeated freezing and thawing.
Note	This product contains sodium azide: a POISONOUS AND HAZARDOUS SUBSTANCE which should be handled by trained staff only.

Applications

- Western Blot (Cell lysate)

Western Blot analysis of U-251 MG cell lysate with VPS26A monoclonal antibody, clone CL2287 (Cat # MAB15737).

- Immunohistochemistry (Formalin/PFA-fixed paraffin-embedded sections)

Immunohistochemical staining (Formalin-fixed paraffin-embedded sections) of human fallopian tube with VPS26A monoclonal antibody, clone CL2287 (Cat # MAB15737) shows strong granular cytoplasmic immunoreactivity in glandular epithelium cells.

- Immunofluorescence

Immunofluorescent staining of MCF7 cells with VPS26A monoclonal antibody, clone CL2287 (Cat # MAB15737) (Green) shows distinct endosomes. Microtubule and nuclear probes are visualized in red and blue respectively (where available).

Gene Info — VPS26A

Entrez GeneID

[9559](#)

Protein Accession#	O75436
Gene Name	VPS26A
Gene Alias	FLJ12930, HB58, Hbeta58, PEP8A, VPS26
Gene Description	vacuolar protein sorting 26 homolog A (S. pombe)
Omim ID	605506
Gene Ontology	Hyperlink
Gene Summary	<p>This gene belongs to a group of vacuolar protein sorting (VPS) genes. The encoded protein is a component of a large multimeric complex, termed the retromer complex, involved in retrograde transport of proteins from endosomes to the trans-Golgi network. The close structural similarity between the yeast and human proteins that make up this complex suggests a similarity in function. Expression studies in yeast and mammalian cells indicate that this protein interacts directly with VPS35, which serves as the core of the retromer complex. Alternative splicing results in multiple transcript variants encoding different isoforms. [provided by RefSeq]</p>
Other Designations	OTTHUMP00000019721 vacuolar protein sorting 26 A

Disease

- [Alzheimer disease](#)
- [Genetic Predisposition to Disease](#)
- [Urinary Bladder Neoplasms](#)