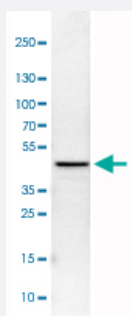


# TUFM monoclonal antibody, clone CL2245

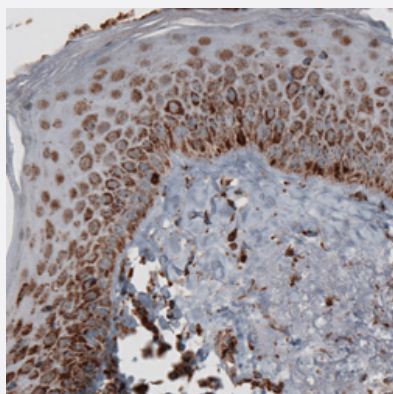
Catalog # MAB15736      Size 100 uL

## Applications



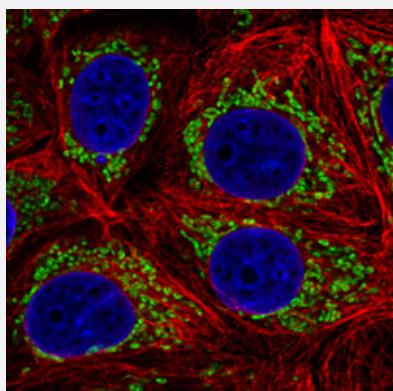
### Western Blot (Cell lysate)

Western Blot analysis of U-251 MG cell lysate with TUFM monoclonal antibody, clone CL2245 (Cat # MAB15736).



### Immunohistochemistry (Formalin/PFA-fixed paraffin-embedded sections)

Immunohistochemical staining (Formalin-fixed paraffin-embedded sections) of human skin with TUFM monoclonal antibody, clone CL2245 (Cat # MAB15736) shows granular cytoplasmic immunoreactivity in epithelial cells.



### Immunofluorescence

Immunofluorescent staining of MCF7 cells with TUFM monoclonal antibody, clone CL2245 (Cat # MAB15736) (Green) shows distinct mitochondrial. Microtubule and nuclear probes are visualized in red and blue respectively (where available).

## Specification

<b>Product Description</b>	Mouse monoclonal antibody raised against partial recombinant human TUFM.
<b>Immunogen</b>	Recombinant protein corresponding to human TUFM.
<b>Epitope</b>	This antibody binds to an epitope located within the peptide sequence PFLLPVEAVYSPGR as determined by overlapping synthetic peptides.
<b>Sequence</b>	AVDTYIPVPARDLEKPFLLPVEAVYSPGRGTVVTGLTERGILKKGDECELLGHSKNIRTVVTGIEM FHKSLERAEAGDNLGALVRGLKREDLRRGLVMVKPGSI
<b>Host</b>	Mouse
<b>Reactivity</b>	Human
<b>Form</b>	Liquid
<b>Purification</b>	Protein A purification
<b>Isotype</b>	IgG1
<b>Recommend Usage</b>	Immunofluorescence (1-4 ug/mL) Immunohistochemistry (Formalin/PFA-fixed paraffin-embedded sections) (1:5000-1:10000) Western Blot (1:500-1:1000) The optimal working dilution should be determined by the end user.
<b>Storage Buffer</b>	In PBS, pH 7.2 (40% glycerol, 0.02% sodium azide).
<b>Storage Instruction</b>	Store at 4°C. For long term storage store at -20°C. Aliquot to avoid repeated freezing and thawing.
<b>Note</b>	This product contains sodium azide: a POISONOUS AND HAZARDOUS SUBSTANCE which should be handled by trained staff only.

## Applications

- Western Blot (Cell lysate)

Western Blot analysis of U-251 MG cell lysate with TUFM monoclonal antibody, clone CL2245 (Cat # MAB15736).

- Immunohistochemistry (Formalin/PFA-fixed paraffin-embedded sections)

Immunohistochemical staining (Formalin-fixed paraffin-embedded sections) of human skin with TUFM monoclonal antibody, clone CL2245 (Cat # MAB15736) shows granular cytoplasmic immunoreactivity in epithelial cells.

- Immunofluorescence

Immunofluorescent staining of MCF7 cells with TUFM monoclonal antibody, clone CL2245 (Cat # MAB15736) (Green) shows distinct mitochondrial. Microtubule and nuclear probes are visualized in red and blue respectively (where available).

## Gene Info — TUFM

**Entrez GeneID** [7284](#)**Protein Accession#** [P49411](#)**Gene Name** TUFM**Gene Alias** COXPD4, EF-TuMT, EFTU, P43**Gene Description** Tu translation elongation factor, mitochondrial**Omim ID** [602389 610678](#)**Gene Ontology** [Hyperlink](#)

**Gene Summary** This gene encodes a protein which participates in protein translation in mitochondria. Mutations in this gene have been associated with combined oxidative phosphorylation deficiency resulting in lactic acidosis and fatal encephalopathy. A pseudogene has been identified on chromosome 17. [provided by RefSeq]

**Other Designations** -