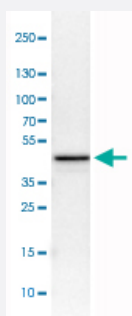


TUFM monoclonal antibody, clone CL2242

Catalog # MAB15734

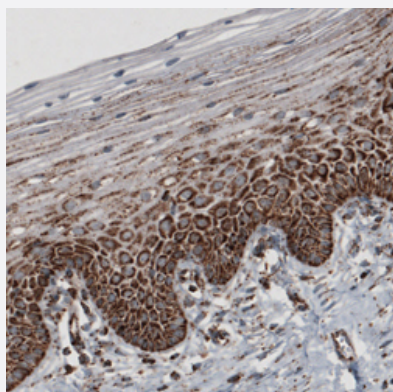
Size 100 uL

Applications



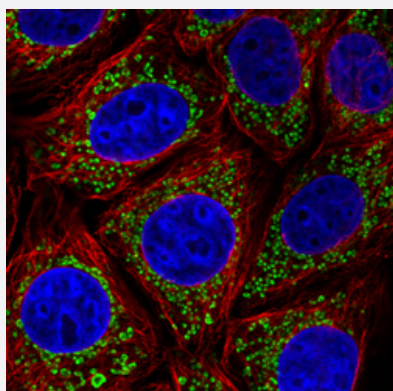
Western Blot (Cell lysate)

Western Blot analysis of U-251 MG cell lysate with TUFM monoclonal antibody, clone CL2242 (Cat # MAB15734).



Immunohistochemistry (Formalin/PFA-fixed paraffin-embedded sections)

Immunohistochemical staining (Formalin-fixed paraffin-embedded sections) of human uterine cervix with TUFM monoclonal antibody, clone CL2242 (Cat # MAB15734) shows granular cytoplasmic immunoreactivity in epithelial cells.



Immunofluorescence

Immunofluorescent staining of MCF7 cells with TUFM monoclonal antibody, clone CL2242 (Cat # MAB15734) (Green) shows distinct mitochondrial. Microtubule and nuclear probes are visualized in red and blue respectively (where available).

Specification

Product Description	Mouse monoclonal antibody raised against partial recombinant human TUFM.
Immunogen	Recombinant protein corresponding to human TUFM.
Epitope	This antibody binds to an epitope located within the peptide sequence RDLEKPFLLPVEAVY as determined by overlapping synthetic peptides.
Sequence	AVDTYIPVPARDLEKPFLLPVEAVYSVPGRGTVVTGTLERGILKKGDECELLGHSKNIRTVVTGIEM FHKSLERAEAGDNLGALVRGLKREDLRRGLVMVKPGSI
Host	Mouse
Reactivity	Human
Form	Liquid
Purification	Protein A purification
Isotype	IgG1
Recommend Usage	Immunofluorescence (1-4 ug/mL) Immunohistochemistry (Formalin/PFA-fixed paraffin-embedded sections) (1:1000-1:2500) Western Blot (1:500-1:1000) The optimal working dilution should be determined by the end user.
Storage Buffer	In PBS, pH 7.2 (40% glycerol, 0.02% sodium azide).
Storage Instruction	Store at 4°C. For long term storage store at -20°C. Aliquot to avoid repeated freezing and thawing.
Note	This product contains sodium azide: a POISONOUS AND HAZARDOUS SUBSTANCE which should be handled by trained staff only.

Applications

- Western Blot (Cell lysate)

Western Blot analysis of U-251 MG cell lysate with TUFM monoclonal antibody, clone CL2242 (Cat # MAB15734).

- Immunohistochemistry (Formalin/PFA-fixed paraffin-embedded sections)

Immunohistochemical staining (Formalin-fixed paraffin-embedded sections) of human uterine cervix with TUFM monoclonal antibody, clone CL2242 (Cat # MAB15734) shows granular cytoplasmic immunoreactivity in epithelial cells.

- Immunofluorescence

Immunofluorescent staining of MCF7 cells with TUFM monoclonal antibody, clone CL2242 (Cat # MAB15734) (Green) shows distinct mitochondrial. Microtubule and nuclear probes are visualized in red and blue respectively (where available).

Gene Info — TUFM

Entrez GeneID [7284](#)**Protein Accession#** [P49411](#)**Gene Name** TUFM**Gene Alias** COXPD4, EF-TuMT, EFTU, P43**Gene Description** Tu translation elongation factor, mitochondrial**Omim ID** [602389 610678](#)**Gene Ontology** [Hyperlink](#)

Gene Summary This gene encodes a protein which participates in protein translation in mitochondria. Mutations in this gene have been associated with combined oxidative phosphorylation deficiency resulting in lactic acidosis and fatal encephalopathy. A pseudogene has been identified on chromosome 17. [provided by RefSeq]

Other Designations -