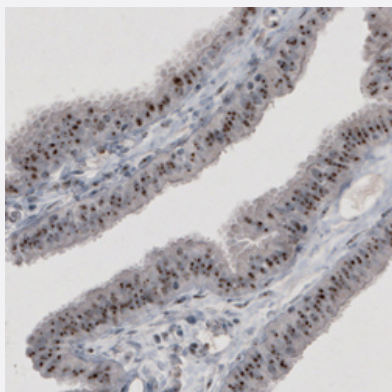


MKI67IP monoclonal antibody, clone CL2240

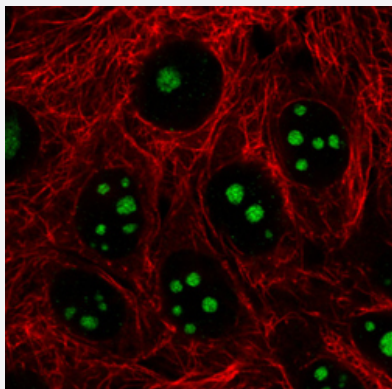
Catalog # MAB15732 Size 100 uL

Applications



Immunohistochemistry (Formalin/PFA-fixed paraffin-embedded sections)

Immunohistochemical staining (Formalin-fixed paraffin-embedded sections) of human fallopian tube with MKI67IP monoclonal antibody, clone CL2240 (Cat # MAB15732) shows strong nucleolar immunoreactivity in glandular and connective tissue cells.



Immunofluorescence

Immunofluorescent staining of MCF7 cells with MKI67IP monoclonal antibody, clone CL2240 (Cat # MAB15732) (Green) shows specific nucleoli. Microtubule and nuclear probes are visualized in red and blue respectively (where available).

Specification

Product Description	Mouse monoclonal antibody raised against partial recombinant human MKI67IP.
Immunogen	Recombinant protein corresponding to human MKI67IP.
Epitope	This antibody binds to an epitope located within the peptide sequence KVSGTLDTPE as determined by overlapping synthetic peptides.
Sequence	IDYDFPSLILQKTESISKTNRQTSTKGQVLRKKKKKVSGTLDTPEKTVDSQGPTPVCTPTFLERRKS QVAELNDDDKDDEI

Host	Mouse
Reactivity	Human
Form	Liquid
Purification	Protein A purification
Isotype	IgG2a
Recommend Usage	Immunofluorescence (1-4 ug/mL) Immunohistochemistry (Formalin/PFA-fixed paraffin-embedded sections) (1:200-1:500) The optimal working dilution should be determined by the end user.
Storage Buffer	In PBS, pH 7.2 (40% glycerol, 0.02% sodium azide).
Storage Instruction	Store at 4°C. For long term storage store at -20°C. Aliquot to avoid repeated freezing and thawing.
Note	This product contains sodium azide: a POISONOUS AND HAZARDOUS SUBSTANCE which should be handled by trained staff only.

Applications

- Immunohistochemistry (Formalin/PFA-fixed paraffin-embedded sections)

Immunohistochemical staining (Formalin-fixed paraffin-embedded sections) of human fallopian tube with MKI67IP monoclonal antibody, clone CL2240 (Cat # MAB15732) shows strong nucleolar immunoreactivity in glandular and connective tissue cells.

- Immunofluorescence

Immunofluorescent staining of MCF7 cells with MKI67IP monoclonal antibody, clone CL2240 (Cat # MAB15732) (Green) shows specific nucleoli. Microtubule and nuclear probes are visualized in red and blue respectively (where available).

Gene Info — MKI67IP

Entrez GeneID	84365
Protein Accession#	Q9BYG3
Gene Name	MKI67IP
Gene Alias	NIFK, Nopp34
Gene Description	MKI67 (FHA domain) interacting nucleolar phosphoprotein
Gene Ontology	Hyperlink

Gene Summary

This gene encodes a protein that interacts with the forkhead-associated domain of the Ki-67 antigen. The encoded protein may bind RNA and may play a role in mitosis and cell cycle progression. Multiple pseudogenes exist on chromosomes 5, 10, 12, 15, and 19.[provided by RefSeq]

Other Designations

nucleolar phosphoprotein Nopp34|nucleolar protein interacting with the FHA domain of pKi-67