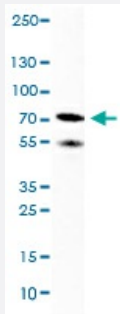


# NEFL monoclonal antibody, clone CL4729

Catalog # MAB15716

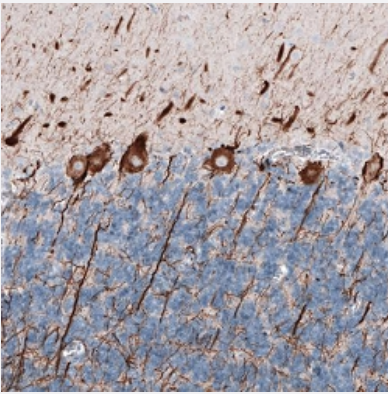
Size 100 uL

## Applications



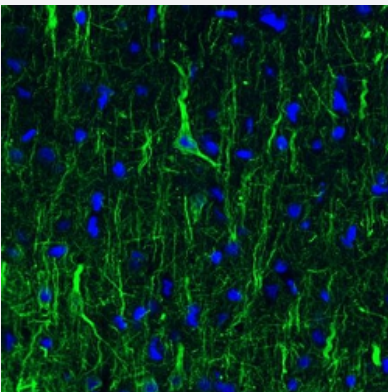
### Western Blot (Tissue lysate)

Western Blot (Tissue lysate) analysis of human cerebral cortex.



### Immunohistochemistry (Formalin/PFA-fixed paraffin-embedded sections)

Immunohistochemical staining (Formalin-fixed paraffin-embedded sections) of human cerebellum shows strong cytoplasmic immunoreactivity in cell bodies and proximal dendrites of Purkinje cells.



### Immunofluorescence

Immunofluorescence staining of rat cerebral cortex shows strong immunoreactivity in neuronal cell bodies and processes.

## Specification

Product Description	Mouse monoclonal antibody raised against partial recombinant human NEFL.
Immunogen	Recombinant protein corresponding to human NEFL.
Sequence	SSFSYEPYYSTSYKRRYVETPRVHISSVRSGYSTARSAYSSYSAPVSSSLSVRRSYSSSSGSLMP SLENLDLSQVAAISNDLKSIRTQEKAQLQDLNDRF
Host	Mouse
Reactivity	Human, Mouse, Rat
Form	Liquid
Purification	Protein A purification
Isotype	IgG1
Recommend Usage	Immunohistochemistry (Formalin/PFA-fixed paraffin-embedded sections) (1:10000-1:20000) Western Blot (1:500-1:1000) The optimal working dilution should be determined by the end user.
Storage Buffer	In PBS, pH 7.2 (40% glycerol, 0.02% sodium azide).
Storage Instruction	Store at 4°C. For long term storage store at -20°C. Aliquot to avoid repeated freezing and thawing.
Note	This product contains sodium azide: a POISONOUS AND HAZARDOUS SUBSTANCE which should be handled by trained staff only.

## Applications

- Western Blot (Tissue lysate)

Western Blot (Tissue lysate) analysis of human cerebral cortex.

- Immunohistochemistry (Formalin/PFA-fixed paraffin-embedded sections)

Immunohistochemical staining (Formalin-fixed paraffin-embedded sections) of human cerebellum shows strong cytoplasmic immunoreactivity in cell bodies and proximal dendrites of Purkinje cells.

- Immunofluorescence

Immunofluorescence staining of rat cerebral cortex shows strong immunoreactivity in neuronal cell bodies and processes.

## Gene Info — NEFL

Entrez GeneID [4747](#)

Protein Accession#	<a href="#">P07196</a>
Gene Name	NEFL
Gene Alias	CMT1F, CMT2E, FLJ53642, NF-L, NF68, NFL
Gene Description	neurofilament, light polypeptide
Omim ID	<a href="#">162280 607684 607734</a>
Gene Ontology	<a href="#">Hyperlink</a>
Gene Summary	Neurofilaments are type IV intermediate filament heteropolymers composed of light, medium, and heavy chains. Neurofilaments comprise the axoskeleton and they functionally maintain the neuronal caliber. They may also play a role in intracellular transport to axons and dendrites. This gene encodes the light chain neurofilament protein. Mutations in this gene cause Charcot-Marie-Tooth disease types 1F (CMT1F) and 2E (CMT2E), disorders of the peripheral nervous system that are characterized by distinct neuropathies. A pseudogene has been identified on chromosome Y. [provided by RefSeq]
Other Designations	light molecular weight neurofilament protein neurofilament protein, light chain neurofilament subunit NF-L neurofilament triplet L protein neurofilament, light polypeptide 68kDa neurofilament-light

## Pathway

- [Amyotrophic lateral sclerosis \(ALS\)](#)

## Disease

- [Genetic Predisposition to Disease](#)
- [Kidney Failure](#)
- [Multiple Sclerosis](#)
- [Parkinson disease](#)