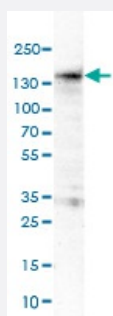


MKL1 monoclonal antibody, clone CL4281

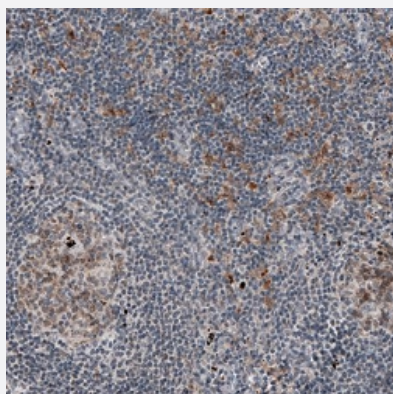
Catalog # MAB15707 Size 100 uL

Applications



Western Blot (Cell lysate)

Western Blot (Cell lysate) analysis of HL-60 cell lysate.



Immunohistochemistry (Formalin/PFA-fixed paraffin-embedded sections)

Immunohistochemical staining (Formalin-fixed paraffin-embedded sections) of human lymph node shows moderate immunoreactivity in a subset of lymphoid cells.

Specification

Product Description	Mouse monoclonal antibody raised against partial recombinant human MKL1.
Immunogen	Recombinant protein corresponding to human MKL1.
Epitope	This antibody binds to an epitope located within the peptide sequence PTLITDSTGTHLVLT as determined by overlapping synthetic peptides.
Sequence	EQEKRAQQPAPAPAPLGTPVKQENSFSSCQLSQQLGPAHPFNPSLAAPATNHIDPCAVAPGP PSVVVKQEALQPEPEPVPAPQLLLGPQGPSLIKGVAPPTLITDSTGTHLVLTVTNKNADSPG
Host	Mouse

Reactivity	Human
Form	Liquid
Purification	Protein A purification
Isotype	IgG1
Recommend Usage	Immunohistochemistry (Formalin/PFA-fixed paraffin-embedded sections) (1:50-1:200) Western Blot (1:500-1:1000) The optimal working dilution should be determined by the end user.
Storage Buffer	In PBS, pH 7.2 (40% glycerol, 0.02% sodium azide).
Storage Instruction	Store at 4°C. For long term storage store at -20°C. Aliquot to avoid repeated freezing and thawing.
Note	This product contains sodium azide: a POISONOUS AND HAZARDOUS SUBSTANCE which should be handled by trained staff only.

Applications

- Western Blot (Cell lysate)

Western Blot (Cell lysate) analysis of HL-60 cell lysate.

- Immunohistochemistry (Formalin/PFA-fixed paraffin-embedded sections)

Immunohistochemical staining (Formalin-fixed paraffin-embedded sections) of human lymph node shows moderate immunoreactivity in a subset of lymphoid cells.

Gene Info — MKL1

Entrez GeneID	57591
Protein Accession#	Q969V6
Gene Name	MKL1
Gene Alias	BSAC, MAL, MRTF-A
Gene Description	megakaryoblastic leukemia (translocation) 1
Omim ID	606078
Gene Ontology	Hyperlink

Gene Summary

The protein encoded by this gene interacts with the transcription factor myocardin, a key regulator of smooth muscle cell differentiation. The encoded protein is predominantly nuclear and may help transduce signals from the cytoskeleton to the nucleus. This gene is involved in a specific translocation event that creates a fusion of this gene and the RNA-binding motif protein-15 gene. This translocation has been associated with acute megakaryocytic leukemia. [provided by RefSeq]

Other Designations

OTTHUMP00000028831|RBM15/MKL1 fusion|RNA-binding motif protein 15/megakaryoblastic leukemia-1 fusion protein|basic, SAP and coiled-coil domain|megakaryoblastic leukemia 1|megakaryoblastic leukemia 1 protein|megakaryocytic acute leukemia|myocardin-related

Disease

- [Atherosclerosis](#)
- [Coronary Artery Disease](#)
- [Disease Susceptibility](#)