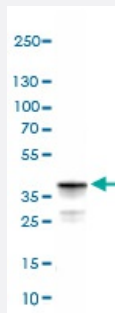


OTC monoclonal antibody, clone CL4045

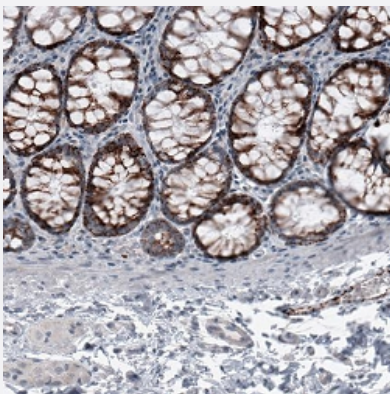
Catalog # MAB15702 Size 100 uL

Applications



Western Blot (Tissue lysate)

Western Blot (Tissue lysate) analysis of human liver.



Immunohistochemistry (Formalin/PFA-fixed paraffin-embedded sections)

Immunohistochemical staining (Formalin-fixed paraffin-embedded sections) of human colon shows granular cytoplasmic positivity in glandular cells.

Specification

| | |
|----------------------------|--|
| Product Description | Mouse monoclonal antibody raised against partial recombinant human OTC. |
| Immunogen | Recombinant protein corresponding to human OTC. |
| Epitope | This antibody binds to an epitope located within the peptide sequence GYEPDASVTKLAEQY as determined by overlapping synthetic peptides. |
| Sequence | ILADYLTLQEHYSSLKGLTSLWIGDGNNILHSIMMSAAKFGMHLQAATPKGYEPDASVTKLAEQYAK ENGTKLLLTNDPLEAAHGNNVLTDTWISMGQEEEEKKRLQAFQGYQVTMKTAKVAASDWT |
| Host | Mouse |

| | |
|---------------------|---|
| Reactivity | Human |
| Form | Liquid |
| Purification | Protein A purification |
| Isotype | IgG2a |
| Recommend Usage | Immunohistochemistry (Formalin/PFA-fixed paraffin-embedded sections) (1:10000-1:20000) Western Blot (1:500-1:1000) The optimal working dilution should be determined by the end user. |
| Storage Buffer | In PBS, pH 7.2 (40% glycerol, 0.02% sodium azide). |
| Storage Instruction | Store at 4°C. For long term storage store at -20°C. Aliquot to avoid repeated freezing and thawing. |
| Note | This product contains sodium azide: a POISONOUS AND HAZARDOUS SUBSTANCE which should be handled by trained staff only. |

Applications

- Western Blot (Tissue lysate)

Western Blot (Tissue lysate) analysis of human liver.

- Immunohistochemistry (Formalin/PFA-fixed paraffin-embedded sections)

Immunohistochemical staining (Formalin-fixed paraffin-embedded sections) of human colon shows granular cytoplasmic positivity in glandular cells.

Gene Info — OTC

| | |
|--------------------|---|
| Entrez GeneID | 5009 |
| Protein Accession# | P00480 |
| Gene Name | OTC |
| Gene Alias | MGC129967, MGC129968, MGC138856, OCTD |
| Gene Description | ornithine carbamoyltransferase |
| Omim ID | 300461 311250 |
| Gene Ontology | Hyperlink |

Gene Summary

This nuclear gene encodes a mitochondrial matrix enzyme. Missense, nonsense, and frameshift mutations in this enzyme lead to ornithine transcarbamylase deficiency, which causes hyperammonemia. Since the gene for this enzyme maps close to that for Duchenne muscular dystrophy, it may play a role in that disease also. [provided by RefSeq]

Other Designations

OTTHUMP00000024343|ornithine transcarbamylase

Pathway

- [Arginine and proline metabolism](#)
- [Metabolic pathways](#)

Disease

- [Alzheimer disease](#)
- [Genetic Predisposition to Disease](#)
- [Ornithine Carbamoyltransferase Deficiency Disease](#)