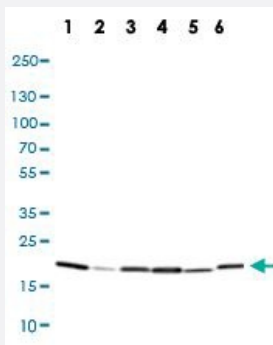


PPIB monoclonal antibody, clone CL3901

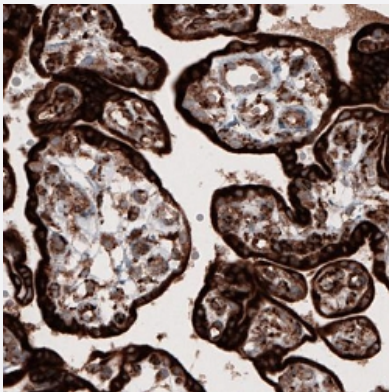
Catalog # MAB15696 Size 100 uL

Applications



Western Blot

Western Blot (Cell lysate) analysis of (1) human HeLa cell, (2) human HEK 293 cell, (3) human A-431 cell, (4) human HepG2 cell, (5) mouse NIH-3T3 cell, (6) rat cell line NBT-II.



Immunohistochemistry (Formalin/PFA-fixed paraffin-embedded sections)

Immunohistochemical staining (Formalin-fixed paraffin-embedded sections) of human placenta shows strong cytoplasmic immunoreactivity in trophoblasts.



RNAi Knockdown

Western Blot analysis of U-251 cell transfected with (1) control siRNA, (2) target specific siRNA probe #1, (3) target specific siRNA probe #2 using PPIB monoclonal antibody, clone CL3901. Downregulation of antibody signal confirms target specificity. Remaining % intensity, relative control lane, is indicated. GAPDH monoclonal antibody was used as loading control.

Specification

Product Description	Mouse monoclonal antibody raised against synthetic peptide of human PPIB.
Immunogen	A synthetic peptide corresponding to human PPIB.
Sequence	TKTDSRDKPLKDVIIADCGKIEVEKPFIAIKE
Host	Mouse
Reactivity	Human, Mouse, Rat
Form	Liquid
Purification	Protein A purification
Isotype	IgG2a
Recommend Usage	Immunohistochemistry (Formalin/PFA-fixed paraffin-embedded sections) (1:5000-1:10000) Western Blot (1:500-1:1000) The optimal working dilution should be determined by the end user.
Storage Buffer	In PBS, pH 7.2 (40% glycerol, 0.02% sodium azide).
Storage Instruction	Store at 4°C. For long term storage store at -20°C. Aliquot to avoid repeated freezing and thawing.
Note	This product contains sodium azide: a POISONOUS AND HAZARDOUS SUBSTANCE which should be handled by trained staff only.

Applications

- Western Blot

Western Blot (Cell lysate) analysis of (1) human HeLa cell, (2) human HEK 293 cell, (3) human A-431 cell, (4) human HepG2 cell, (6) mouse NIH-3T3 cell, (7) rat cell line NBT-II.

- Immunohistochemistry (Formalin/PFA-fixed paraffin-embedded sections)

Immunohistochemical staining (Formalin-fixed paraffin-embedded sections) of human placenta shows strong cytoplasmic immunoreactivity in trophoblasts.

- RNAi Knockdown

Western Blot analysis of U-251 cell transfected with (1) control siRNA, (2) target specific siRNA probe #1, (3) target specific siRNA probe #2 using PPIB monoclonal antibody, clone CL3901. Downregulation of antibody signal confirms target specificity. Remaining % intensity, relative control lane, is indicated. GAPDH monoclonal antibody was used as loading control.

Gene Info — PPIB

Entrez GeneID [5479](#)**Protein Accession#** [P23284](#)**Gene Name** PPIB**Gene Alias** CYP-S1, CYPB, MGC14109, MGC2224, SCYLP**Gene Description** peptidylprolyl isomerase B (cyclophilin B)**Omim ID** [123841](#)**Gene Ontology** [Hyperlink](#)

Gene Summary The protein encoded by this gene is a cyclosporine-binding protein and is mainly located within the endoplasmic reticulum. It is associated with the secretory pathway and released in biological fluids. This protein can bind to cells derived from T- and B-lymphocytes, and may regulate cyclosporine A-mediated immunosuppression. [provided by RefSeq]

Other Designations PPlase|S-cyclophilin|cyclophilin B|cyclophilin-like protein|peptidyl-prolyl cis-trans isomerase B|peptidylprolyl isomerase B|rotamase

Disease

- [Disease Progression](#)
- [Disease Susceptibility](#)
- [HIV Infections](#)