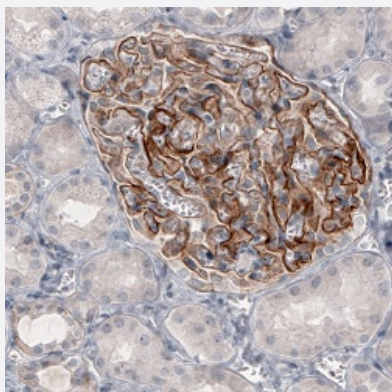


# THSD7A monoclonal antibody, clone CL3778

Catalog # MAB15692      Size 100 uL

## Applications



### Immunohistochemistry (Formalin/PFA-fixed paraffin-embedded sections)

Immunohistochemical staining (Formalin-fixed paraffin-embedded sections) of human kidney shows membranous immunoreactivity in the glomerulus.

## Specification

<b>Product Description</b>	Mouse monoclonal antibody raised against partial recombinant human THSD7A.
<b>Immunogen</b>	Recombinant protein corresponding to human THSD7A.
<b>Epitope</b>	This antibody binds to an epitope located within the peptide sequence ELRYSLHVGP as determined by overlapping synthetic peptides.
<b>Sequence</b>	VCQSSPCEAEELRYSLHVGPWSTCSMPHSRQVRQARRRGKNKEREKDRSGVKDPEARELIKK KRNRNRQNRQENKYWDIQIGYQTREVMCINKTGKAADLSFCQQEKLPMTFQSC
<b>Host</b>	Mouse
<b>Reactivity</b>	Human
<b>Form</b>	Liquid
<b>Purification</b>	Protein A purification
<b>Isotype</b>	IgG1

<b>Recommend Usage</b>	Immunohistochemistry (Formalin/PFA-fixed paraffin-embedded sections) (1:500-1:1000) The optimal working dilution should be determined by the end user.
<b>Storage Buffer</b>	In PBS, pH 7.2 (40% glycerol, 0.02% sodium azide).
<b>Storage Instruction</b>	Store at 4°C. For long term storage store at -20°C. Aliquot to avoid repeated freezing and thawing.
<b>Note</b>	This product contains sodium azide: a POISONOUS AND HAZARDOUS SUBSTANCE which should be handled by trained staff only.

## Applications

- Immunohistochemistry (Formalin/PFA-fixed paraffin-embedded sections)

Immunohistochemical staining (Formalin-fixed paraffin-embedded sections) of human kidney shows membranous immunoreactivity in the glomerulus.

## Gene Info — THSD7A

<b>Entrez GeneID</b>	<a href="#">221981</a>
<b>Protein Accession#</b>	<a href="#">Q9UPZ6</a>
<b>Gene Name</b>	THSD7A
<b>Gene Alias</b>	KIAA0960
<b>Gene Description</b>	thrombospondin, type I, domain containing 7A
<b>Gene Ontology</b>	<a href="#">Hyperlink</a>
<b>Gene Summary</b>	type I
<b>Other Designations</b>	-

## Disease

- [Bipolar Disorder](#)
- [Disease](#)
- [Genetic Predisposition to Disease](#)

- [Osteoporosis](#)
- [Tobacco Use Disorder](#)