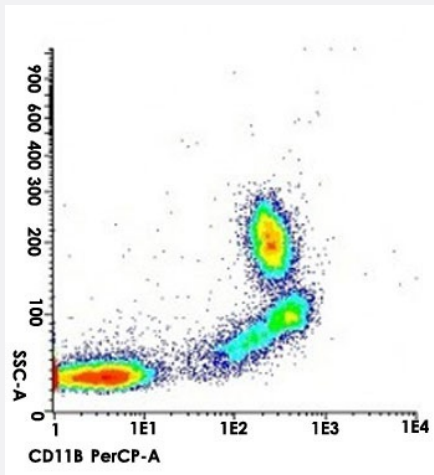


# Itgam monoclonal antibody, clone M1/70 (PerCP)

Catalog # MAB15680      Size 100 ug

## Applications



### Flow Cytometry

Flow cytometric analysis of mouse bone marrow with Itgam monoclonal antibody, clone M1/70 (PerCP).

## Specification

**Product Description** Rat monoclonal antibody raised against mouse Itgam.

**Immunogen** B10 mouse spleen cells enriched for T cells.

**Host** Rat

**Theoretical MW (kDa)** 170

**Reactivity** Human, Mouse, Rabbit

**Form** Liquid

**Conjugation** PerCP

**Purification** Affinity chromatography

**Isotype** IgG2b

<b>Recommend Usage</b>	Flow Cytometry ( $\leq 1 \text{ ug}/10^6 \text{ cells}$ ) The optimal working dilution should be determined by the end user.
<b>Storage Buffer</b>	In PBS, pH 7.4 (protein stabilizer, 0.09% sodium azide).
<b>Storage Instruction</b>	Store in the dark at 4°C.
<b>Note</b>	This product contains sodium azide: a POISONOUS AND HAZARDOUS SUBSTANCE which should be handled by trained staff only.

## Applications

- Flow Cytometry

Flow cytometric analysis of mouse bone marrow with Itgam monoclonal antibody, clone M1/70 (PerCP).

## Gene Info — Itgam

<b>Entrez GeneID</b>	<a href="#">16409</a>
<b>Gene Name</b>	Itgam
<b>Gene Alias</b>	CD11b/CD18, CR3, CR3A, Cd11b, F730045J24Rik, Ly-40, MAC1, Mac-1, Mac-1a
<b>Gene Description</b>	integrin alpha M
<b>Gene Ontology</b>	<a href="#">Hyperlink</a>
<b>Other Designations</b>	CD11B (p170) Mac-1 alpha cell surface glycoprotein MAC-1 alpha subunit complement component receptor 3 alpha complement component receptor 3 alpha-a complement receptor type 3 leukocyte adhesion receptor MO1 macrophage antigen alpha