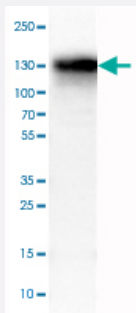


CD68 monoclonal antibody, clone CL1346

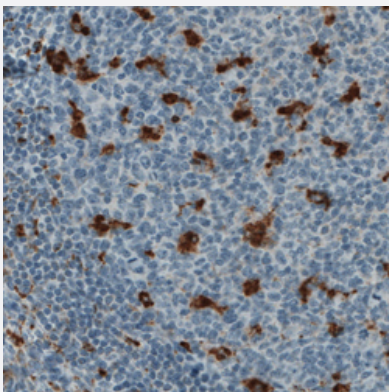
Catalog # MAB15679 Size 100 uL

Applications



Western Blot (Tissue lysate)

Western Blot analysis of human spleen tissue lysate with CD68 monoclonal antibody, clone CL1346 (Cat # MAB15679).



Immunohistochemistry (Formalin/PFA-fixed paraffin-embedded sections)

Immunohistochemical staining (Formalin-fixed paraffin-embedded sections) of human tonsil with CD68 monoclonal antibody, clone CL1346 (Cat # MAB15679) shows strong immunoreactivity in a subset of lymphoid cells.

Specification

| | |
|----------------------------|---|
| Product Description | Mouse monoclonal antibody raised against partial recombinant human CD68. |
| Immunogen | Recombinant protein corresponding to human CD68. |
| Epitope | This antibody binds to an epitope located within the peptide sequence SPTSKETIGDYWTN as determined by overlapping synthetic peptides. |
| Sequence | SPTSKETIGDYWTNNGSQPCVHLQAQIQIRVMYTTQGGGEAWGISVLNPNKTKVQGSCEGAHPHL LLSFPYG |
| Host | Mouse |

| | |
|---------------------|---|
| Reactivity | Human |
| Form | Liquid |
| Purification | Protein A purification |
| Isotype | IgG1 |
| Recommend Usage | Immunohistochemistry (Formalin/PFA-fixed paraffin-embedded sections) (1:1000-1:2500) Western Blot (1:500-1:1000) The optimal working dilution should be determined by the end user. |
| Storage Buffer | In PBS, pH 7.2 (40% glycerol, 0.02% sodium azide). |
| Storage Instruction | Store at 4°C. For long term storage store at -20°C. Aliquot to avoid repeated freezing and thawing. |
| Note | This product contains sodium azide: a POISONOUS AND HAZARDOUS SUBSTANCE which should be handled by trained staff only. |

Applications

- Western Blot (Tissue lysate)

Western Blot analysis of human spleen tissue lysate with CD68 monoclonal antibody, clone CL1346 (Cat # MAB15679).

- Immunohistochemistry (Formalin/PFA-fixed paraffin-embedded sections)

Immunohistochemical staining (Formalin-fixed paraffin-embedded sections) of human tonsil with CD68 monoclonal antibody, clone CL1346 (Cat # MAB15679) shows strong immunoreactivity in a subset of lymphoid cells.

Gene Info — CD68

| | |
|--------------------|-------------------------------|
| Entrez GeneID | 968 |
| Protein Accession# | P34810 |
| Gene Name | CD68 |
| Gene Alias | DKFZp686M18236, GP110, SCARD1 |
| Gene Description | CD68 molecule |
| Omim ID | 153634 |
| Gene Ontology | Hyperlink |

Gene Summary

This gene encodes a 110-kD transmembrane glycoprotein that is highly expressed by human monocytes and tissue macrophages. It is a member of the lysosomal/endosomal-associated membrane glycoprotein (LAMP) family. The protein primarily localizes to lysosomes and endosomes with a smaller fraction circulating to the cell surface. It is a type I integral membrane protein with a heavily glycosylated extracellular domain and binds to tissue- and organ-specific lectins or selectins. The protein is also a member of the scavenger receptor family. Scavenger receptors typically function to clear cellular debris, promote phagocytosis, and mediate the recruitment and activation of macrophages. Alternative splicing results in multiple transcripts encoding different isoforms. [provided by RefSeq]

Other Designations

CD68 antigen|OTTHUMP00000135285|macrophage antigen CD68|macrosialin|scavenger receptor class D, member 1

Pathway

- [Lysosome](#)