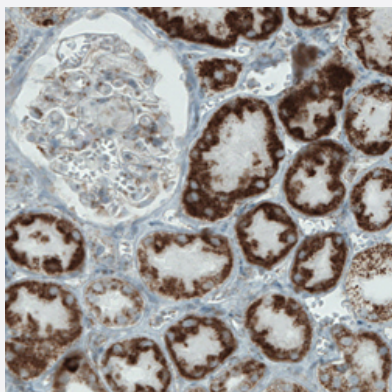


MACC1 monoclonal antibody, clone CL0856

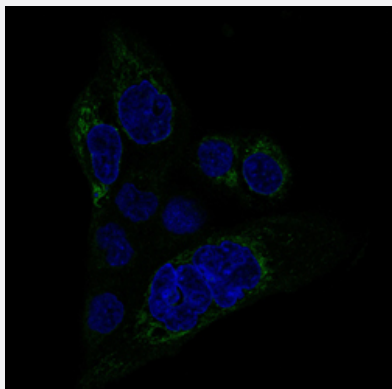
Catalog # MAB15655 Size 100 uL

Applications



Immunohistochemistry (Formalin/PFA-fixed paraffin-embedded sections)

Immunohistochemical staining (Formalin-fixed paraffin-embedded sections) of human kidney with MACC1 monoclonal antibody, clone CL0856 (Cat # MAB15655) shows strong cytoplasmic immunoreactivity in renal tubules.



Immunofluorescence

Immunofluorescent staining of A-431 cells with MACC1 monoclonal antibody, clone CL0856 (Cat # MAB15655) (Green) shows specific staining in mitochondria. Microtubule and nuclear probes are visualized in red and blue, respectively (where available).

Specification

Product Description	Mouse monoclonal antibody raised against partial recombinant human MACC1.
Immunogen	Recombinant protein corresponding to human MACC1.
Sequence	FRSGRIAQSMSEANLIDMEAGKLSKSCNITECQDPDLLHNWPDAFTLRGNNASKVANPFWNQLS ASNPF
Host	Mouse
Reactivity	Human

Form	Liquid
Purification	Protein A purification
Isotype	IgG1
Recommend Usage	Immunofluorescence (1-4 ug/mL) Immunohistochemistry (Formalin/PFA-fixed paraffin-embedded sections) (1:500-1:1000) The optimal working dilution should be determined by the end user.
Storage Buffer	In PBS, pH 7.2 (40% glycerol, 0.02% sodium azide).
Storage Instruction	Store at 4°C. For long term storage store at -20°C. Aliquot to avoid repeated freezing and thawing.
Note	This product contains sodium azide: a POISONOUS AND HAZARDOUS SUBSTANCE which should be handled by trained staff only.

Applications

- Immunohistochemistry (Formalin/PFA-fixed paraffin-embedded sections)

Immunohistochemical staining (Formalin-fixed paraffin-embedded sections) of human kidney with MACC1 monoclonal antibody, clone CL0856 (Cat # MAB15655) shows strong cytoplasmic immunoreactivity in renal tubules.

- Immunofluorescence

Immunofluorescent staining of A-431 cells with MACC1 monoclonal antibody, clone CL0856 (Cat # MAB15655) (Green) shows specific staining in mitochondria. Microtubule and nuclear probes are visualized in red and blue, respectively (where available).

Gene Info — MACC1

Entrez GeneID	346389
Protein Accession#	Q6ZN28
Gene Name	MACC1
Gene Alias	7A5, SH3BP4L
Gene Description	metastasis associated in colon cancer 1
Gene Ontology	Hyperlink

Gene Summary

MACC1 is a key regulator of the hepatocyte growth factor (HGF; MIM 142409)-HGF receptor (HGF-R, or MET; MIM 164860) pathway, which is involved in cellular growth, epithelial-mesenchymal transition, angiogenesis, cell motility, invasiveness, and metastasis. Expression of MACC1 in colon cancer (MIM 114500) specimens is an independent prognostic indicator for metastasis formation and metastasis-free survival (Stein et al., 2009 [PubMed 19098908]).[supplied by OMIM]

Other Designations

putative binding protein 7a5