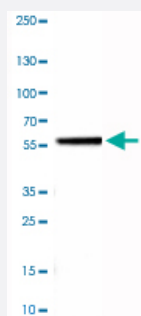


NAPRT1 monoclonal antibody, clone CL0665

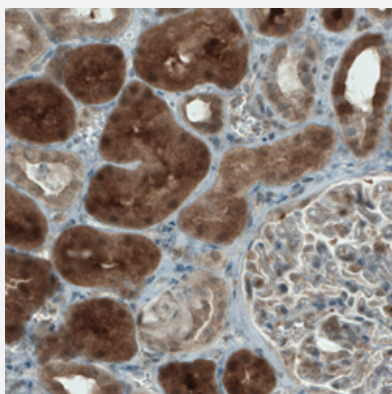
Catalog # MAB15654 Size 100 uL

Applications



Western Blot (Tissue lysate)

Western Blot analysis of human liver tissue lysate with NAPRT1 monoclonal antibody, clone CL0665 (Cat # MAB15654).



Immunohistochemistry (Formalin/PFA-fixed paraffin-embedded sections)

Immunohistochemical staining (Formalin-fixed paraffin-embedded sections) of human kidney with NAPRT1 monoclonal antibody, clone CL0665 (Cat # MAB15654) shows strong cytoplasmic immunoreactivity in renal tubules.

Specification

Product Description	Mouse monoclonal antibody raised against partial recombinant human NAPRT1.
Immunogen	Recombinant protein corresponding to human NAPRT1.
Epitope	This antibody binds to an epitope located within the peptide sequence PAFFEHLRALDCSEV as determined by overlapping synthetic peptides.
Sequence	PAFFEHLRALDCSEVTVRALPEGSLAFPGVPLLQVSGPLLVVQLLETPLLCLVSYASLVATNAAR LRLIAGP
Host	Mouse

Reactivity	Human
Form	Liquid
Purification	Protein A purification
Isotype	IgG1
Recommend Usage	Immunohistochemistry (Formalin/PFA-fixed paraffin-embedded sections) (1:200-1:500) Western Blot (1:500-1:1000) The optimal working dilution should be determined by the end user.
Storage Buffer	In PBS, pH 7.2 (40% glycerol, 0.02% sodium azide).
Storage Instruction	Store at 4°C. For long term storage store at -20°C. Aliquot to avoid repeated freezing and thawing.
Note	This product contains sodium azide: a POISONOUS AND HAZARDOUS SUBSTANCE which should be handled by trained staff only.

Applications

- Western Blot (Tissue lysate)

Western Blot analysis of human liver tissue lysate with NAPRT1 monoclonal antibody, clone CL0665 (Cat # MAB15654).

- Immunohistochemistry (Formalin/PFA-fixed paraffin-embedded sections)

Immunohistochemical staining (Formalin-fixed paraffin-embedded sections) of human kidney with NAPRT1 monoclonal antibody, clone CL0665 (Cat # MAB15654) shows strong cytoplasmic immunoreactivity in renal tubules.

Gene Info — NAPRT1

Entrez GeneID	93100
Protein Accession#	Q6XQN6
Gene Name	NAPRT1
Gene Alias	PP3856
Gene Description	nicotinate phosphoribosyltransferase domain containing 1
Omim ID	611552
Gene Ontology	Hyperlink

Gene Summary

Nicotinic acid (NA; niacin) is converted by nicotinic acid phosphoribosyltransferase (NAPRT; EC 2.4.2.11) to NA mononucleotide (NaMN), which is then converted to NA adenine dinucleotide (NaAD), and finally to nicotinamide adenine dinucleotide (NAD), which serves as a coenzyme in cellular redox reactions and is an essential component of a variety of processes in cellular metabolism including response to stress (Hara et al., 2007).[supplied by OMIM]

Other Designations

nicotinic acid phosphoribosyltransferase