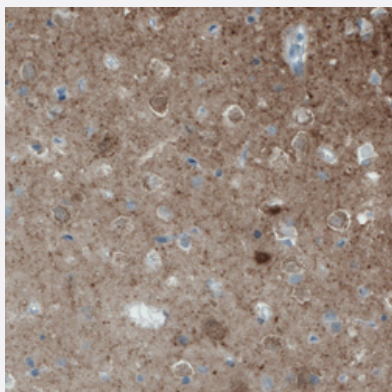


NECAB2 monoclonal antibody, clone CL0524

Catalog # MAB15651 Size 100 uL

Applications



Immunohistochemistry (Formalin/PFA-fixed paraffin-embedded sections)

Immunohistochemical staining (Formalin-fixed paraffin-embedded sections) of human cerebral cortex with NECAB2 monoclonal antibody, clone CL0524 (Cat # MAB15651) shows moderate immunoreactivity in the neuropil.

Specification

Product Description	Mouse monoclonal antibody raised against partial recombinant human NECAB2.
Immunogen	Recombinant protein corresponding to human NECAB2.
Epitope	This antibody binds to an epitope located within the peptide sequence IGRLESKALWFDLQQ as determined by overlapping synthetic peptides.
Sequence	ATEDAKEEGLEAQISRLAELIGRLESKALWFDLQQRLSDEDGTNMHLQLVRQEMAVCPEQLSEFLDSLRQYLRGTTGVRNCFHITAVRLSDGFTFVIYEFWETEEAWKRHLQSPLCKAFRHVKVDTLSQPEALSRLVPA
Host	Mouse
Reactivity	Human
Form	Liquid
Purification	Protein A purification
Isotype	IgG1

Recommend Usage	Immunohistochemistry (Formalin/PFA-fixed paraffin-embedded sections) (1:500-1:1000) The optimal working dilution should be determined by the end user.
Storage Buffer	In PBS, pH 7.2 (40% glycerol, 0.02% sodium azide).
Storage Instruction	Store at 4°C. For long term storage store at -20°C. Aliquot to avoid repeated freezing and thawing.
Note	This product contains sodium azide: a POISONOUS AND HAZARDOUS SUBSTANCE which should be handled by trained staff only.

Applications

- Immunohistochemistry (Formalin/PFA-fixed paraffin-embedded sections)

Immunohistochemical staining (Formalin-fixed paraffin-embedded sections) of human cerebral cortex with NECAB2 monoclonal antibody, clone CL0524 (Cat # MAB15651) shows moderate immunoreactivity in the neuropil.

Gene Info — NECAB2

Entrez GeneID	54550
Protein Accession#	Q7Z6G3
Gene Name	NECAB2
Gene Alias	EFCBP2
Gene Description	N-terminal EF-hand calcium binding protein 2
Gene Ontology	Hyperlink
Other Designations	EF hand calcium binding protein 2 EF-hand calcium binding protein 2 neuronal calcium binding 2 neuronal calcium-binding protein 2

Disease

- [Genetic Predisposition to Disease](#)
- [Tobacco Use Disorder](#)