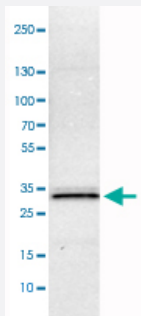


PGAM5 monoclonal antibody, clone CL0624

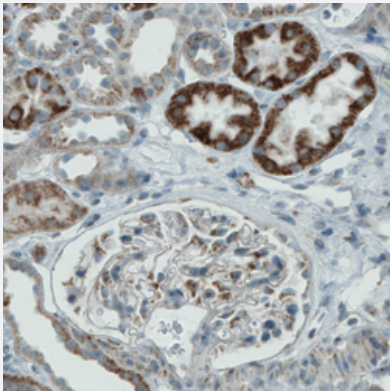
Catalog # MAB15647 Size 100 uL

Applications



Western Blot (Cell lysate)

Western Blot analysis of RT-4 cell lysate with PGAM5 monoclonal antibody, clone CL0624 (Cat # MAB15647).



Immunohistochemistry (Formalin/PFA-fixed paraffin-embedded sections)

Immunohistochemical staining (Formalin-fixed paraffin-embedded sections) of human kidney with PGAM5 monoclonal antibody, clone CL0624 (Cat # MAB15647) shows either strong or moderate cytoplasmic immunoreactivity in subsets of renal tubules.

Specification

Product Description	Mouse monoclonal antibody raised against partial recombinant human PGAM5.
Immunogen	Recombinant protein corresponding to human PGAM5.
Epitope	This antibody binds to an epitope located within the peptide sequence NWDRREPLSLINVRK as determined by overlapping synthetic peptides.
Sequence	NWDRREPLSLINVRKRNVESGEEELASKLDHYKAKATRHIFLRHSQYHVDGSLEKDRTLTPGRE QAELTGLRLASLGLKFNKIV
Host	Mouse

Reactivity	Human
Form	Liquid
Purification	Protein A purification
Isotype	IgG1
Recommend Usage	Immunohistochemistry (Formalin/PFA-fixed paraffin-embedded sections) (1:200-1:500) Western Blot (1:500-1:1000) The optimal working dilution should be determined by the end user.
Storage Buffer	In PBS, pH 7.2 (40% glycerol, 0.02% sodium azide).
Storage Instruction	Store at 4°C. For long term storage store at -20°C. Aliquot to avoid repeated freezing and thawing.
Note	This product contains sodium azide: a POISONOUS AND HAZARDOUS SUBSTANCE which should be handled by trained staff only.

Applications

- Western Blot (Cell lysate)

Western Blot analysis of RT-4 cell lysate with PGAM5 monoclonal antibody, clone CL0624 (Cat # MAB15647).

- Immunohistochemistry (Formalin/PFA-fixed paraffin-embedded sections)

Immunohistochemical staining (Formalin-fixed paraffin-embedded sections) of human kidney with PGAM5 monoclonal antibody, clone CL0624 (Cat # MAB15647) shows either strong or moderate cytoplasmic immunoreactivity in subsets of renal tubules.

Gene Info — PGAM5

Entrez GeneID	192111
Protein Accession#	Q96HS1
Gene Name	PGAM5
Gene Alias	BXLBv68, MGC5352
Gene Description	phosphoglycerate mutase family member 5
Gene Ontology	Hyperlink
Other Designations	Bcl-XL-binding protein v68