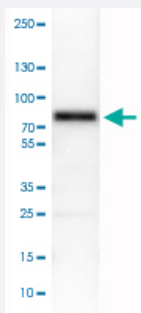


# SOX9 monoclonal antibody, clone CL0639

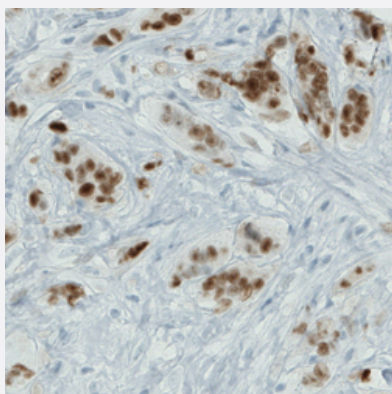
Catalog # MAB15643      Size 100 uL

## Applications



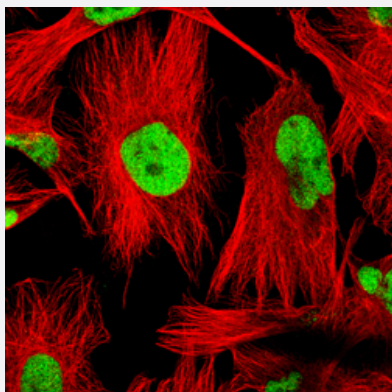
### Western Blot (Cell lysate)

Western Blot analysis of U-251 MG cell lysate with SOX9 monoclonal antibody, clone CL0639 (Cat # MAB15643).



### Immunohistochemistry (Formalin/PFA-fixed paraffin-embedded sections)

Immunohistochemical staining (Formalin-fixed paraffin-embedded sections) of human breast cancer with SOX9 monoclonal antibody, clone CL0639 (Cat # MAB15643) shows strong nuclear immunoreactivity in tumor cells.



### Immunofluorescence

Immunofluorescent staining of U-251 cells with SOX9 monoclonal antibody, clone CL0639 (Cat # MAB15643) (Green) shows specific staining in the nucleoplasm. Microtubule and nuclear probes are visualized in red and blue, respectively (where available).

## Specification

Product Description	Mouse monoclonal antibody raised against partial recombinant human SOX9.
Immunogen	Recombinant protein corresponding to human SOX9.
Epitope	This antibody binds to an epitope located within the peptide sequence SQRTHIKTEQLSPSH as determined by overlapping synthetic peptides.
Sequence	SQRTHIKTEQLSPSHYSEQQQHSPQQIAYSPFNLPHYSPSYPPITRSQYDYTDHQNSSSYSHAAG QGTGLYSTFTYMNPAQRPMYTPADTSGVPSIPQTHSPQHWEQPVYTQLTR
Host	Mouse
Reactivity	Human, Mouse
Form	Liquid
Purification	Protein A purification
Isotype	IgG2a
Recommend Usage	Immunofluorescence (1-4 ug/mL) Immunohistochemistry (Formalin/PFA-fixed paraffin-embedded sections) (1:500-1:1000) Western Blot (1:500-1:1000) The optimal working dilution should be determined by the end user.
Storage Buffer	In PBS, pH 7.2 (40% glycerol, 0.02% sodium azide).
Storage Instruction	Store at 4°C. For long term storage store at -20°C. Aliquot to avoid repeated freezing and thawing.
Note	This product contains sodium azide: a POISONOUS AND HAZARDOUS SUBSTANCE which should be handled by trained staff only.

## Applications

- Western Blot (Cell lysate)

Western Blot analysis of U-251 MG cell lysate with SOX9 monoclonal antibody, clone CL0639 (Cat # MAB15643).

- Immunohistochemistry (Formalin/PFA-fixed paraffin-embedded sections)

Immunohistochemical staining (Formalin-fixed paraffin-embedded sections) of human breast cancer with SOX9 monoclonal antibody, clone CL0639 (Cat # MAB15643) shows strong nuclear immunoreactivity in tumor cells.

- Immunofluorescence

Immunofluorescent staining of U-251 cells with SOX9 monoclonal antibody, clone CL0639 (Cat # MAB15643) (Green) shows specific staining in the nucleoplasm. Microtubule and nuclear probes are visualized in red and blue, respectively (where available).

## Gene Info — SOX9

Entrez GeneID [6662](#)

Protein Accession# [P48436](#)

Gene Name SOX9

Gene Alias CMD1, CMPD1, SRA1

Gene Description SRY (sex determining region Y)-box 9

Omim ID [114290 608160](#)

Gene Ontology [Hyperlink](#)

**Gene Summary** The protein encoded by this gene recognizes the sequence CCTTGAG along with other members of the HMG-box class DNA-binding proteins. It acts during chondrocyte differentiation and, with steroidogenic factor 1, regulates transcription of the anti-Muellerian hormone (AMH) gene. Deficiencies lead to the skeletal malformation syndrome campomelic dysplasia, frequently with sex reversal. [provided by RefSeq]

**Other Designations** SRY (sex determining region Y)-box 9 (campomelic dysplasia, autosomal sex-reversal)|SRY (sex-determining region Y)-box 9 (campomelic dysplasia, autosomal sex-reversal)|SRY (sex-determining region Y)-box 9 protein|campomelic dysplasia, autosomal sex-reversal

## Publication Reference

- [LETM1 is a potential cancer stem-like cell marker and predicts poor prognosis in colorectal adenocarcinoma.](#)

Piao L, Feng Y, Yang Z, Qi W, Li H, Han H, Xuan Y.

Pathology, Research and Practice 2019 Jul; 215(7):152437.

Application: Func, Human, Human plasma

## Disease

- [Cleft Lip](#)
- [Cleft Palate](#)
- [Genetic Predisposition to Disease](#)
- [Hypospadias](#)
- [Ovarian Neoplasms](#)

- [Sex determination](#)