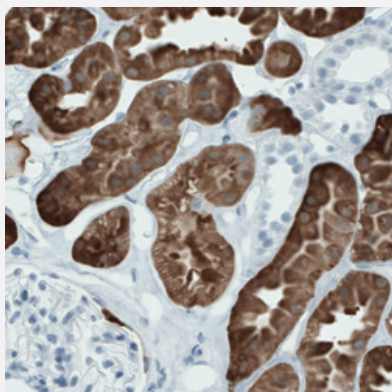


SLC22A2 monoclonal antibody, clone CL0631

Catalog # MAB15642 Size 100 uL

Applications



Immunohistochemistry (Formalin/PFA-fixed paraffin-embedded sections)

Immunohistochemical staining (Formalin-fixed paraffin-embedded sections) of human kidney with SLC22A2 monoclonal antibody, clone CL0631 (Cat # MAB15642) shows strong immunoreactivity in renal tubules.

Specification

Product Description	Mouse monoclonal antibody raised against partial recombinant human SLC22A2.
Immunogen	Recombinant protein corresponding to human SLC22A2.
Epitope	This antibody binds to an epitope located within the peptide sequence KNAEAMRIKHIAKK as determined by overlapping synthetic peptides.
Sequence	ESPRWLISQNKNAEAMRIKHIAKKGKSLPASLQRLRLLEEETGKKLNPSFLDLVRTPQIR
Host	Mouse
Reactivity	Human
Form	Liquid
Purification	Protein A purification
Isotype	IgG2b
Recommend Usage	Immunohistochemistry (Formalin/PFA-fixed paraffin-embedded sections) (1:500-1:1000) The optimal working dilution should be determined by the end user.

Storage Buffer	In PBS, pH 7.2 (40% glycerol, 0.02% sodium azide).
Storage Instruction	Store at 4°C. For long term storage store at -20°C. Aliquot to avoid repeated freezing and thawing.
Note	This product contains sodium azide: a POISONOUS AND HAZARDOUS SUBSTANCE which should be handled by trained staff only.

Applications

- Immunohistochemistry (Formalin/PFA-fixed paraffin-embedded sections)

Immunohistochemical staining (Formalin-fixed paraffin-embedded sections) of human kidney with SLC22A2 monoclonal antibody, clone CL0631 (Cat # MAB15642) shows strong immunoreactivity in renal tubules.

Gene Info — SLC22A2

Entrez GeneID	6582
Protein Accession#	O15244
Gene Name	SLC22A2
Gene Alias	MGC32628, OCT2
Gene Description	solute carrier family 22 (organic cation transporter), member 2
Omim ID	602608
Gene Ontology	Hyperlink
Gene Summary	Polyspecific organic cation transporters in the liver, kidney, intestine, and other organs are critical for elimination of many endogenous small organic cations as well as a wide array of drugs and environmental toxins. This gene is one of three similar cation transporter genes located in a cluster on chromosome 6. The encoded protein contains twelve putative transmembrane domains and is a plasma integral membrane protein. It is found primarily in the kidney, where it may mediate the first step in cation reabsorption. [provided by RefSeq]
Other Designations	OTTHUMP00000017538 organic cation transporter (OCT2) organic cation transporter 2 solute carrier family 22 member 2

Disease

- [Cardiovascular Diseases](#)

- [Diabetes Mellitus](#)
- [Diabetic Nephropathies](#)
- [Edema](#)
- [Hypertension](#)
- [Kidney Failure](#)