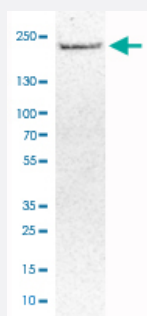


MRC1 monoclonal antibody, clone CL0387

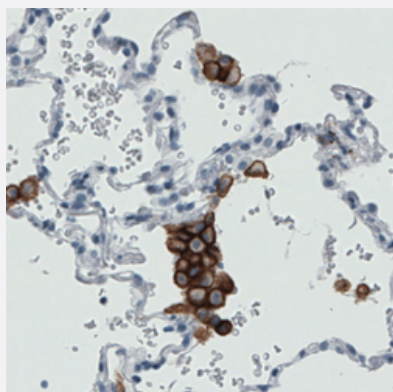
Catalog # MAB15625 Size 100 uL

Applications



Western Blot (Tissue lysate)

Western Blot analysis of human liver tissue lysate with MRC1 monoclonal antibody, clone CL0387 (Cat # MAB15625).



Immunohistochemistry (Formalin/PFA-fixed paraffin-embedded sections)

Immunohistochemical staining (Formalin-fixed paraffin-embedded sections) of human lung with MRC1 monoclonal antibody, clone CL0387 (Cat # MAB15625) shows strong immunoreactivity in macrophages.

Specification

Product Description	Mouse monoclonal antibody raised against partial recombinant human MRC1.
Immunogen	Recombinant protein corresponding to human MRC1.
Epitope	This antibody binds to an epitope located within the peptide sequence VSPSAVQTAACNQDA as determined by overlapping synthetic peptides.
Sequence	NEDHKRCVDAVSPSAVQTAACNQDAESQKFRWVSESQIMSVAFKLCLGVPSKTDWVAITLYACDSKSEFQKWECKNDTLLGIKGEDLFFNYGNRQEKNIIMLYKGSGLWSRWKIYG
Host	Mouse

Reactivity	Human
Form	Liquid
Purification	Protein A purification
Isotype	IgG2b
Recommend Usage	Immunohistochemistry (Formalin/PFA-fixed paraffin-embedded sections) (1:2500-1:5000) Western Blot (1:500-1:1000) The optimal working dilution should be determined by the end user.
Storage Buffer	In PBS, pH 7.2 (40% glycerol, 0.02% sodium azide).
Storage Instruction	Store at 4°C. For long term storage store at -20°C. Aliquot to avoid repeated freezing and thawing.
Note	This product contains sodium azide: a POISONOUS AND HAZARDOUS SUBSTANCE which should be handled by trained staff only.

Applications

- Western Blot (Tissue lysate)

Western Blot analysis of human liver tissue lysate with MRC1 monoclonal antibody, clone CL0387 (Cat # MAB15625).

- Immunohistochemistry (Formalin/PFA-fixed paraffin-embedded sections)

Immunohistochemical staining (Formalin-fixed paraffin-embedded sections) of human lung with MRC1 monoclonal antibody, clone CL0387 (Cat # MAB15625) shows strong immunoreactivity in macrophages.

Gene Info — MRC1

Entrez GeneID	4360
Protein Accession#	P22897
Gene Name	MRC1
Gene Alias	CD206, CLEC13D, MMR
Gene Description	mannose receptor, C type 1
Omim ID	153618
Gene Ontology	Hyperlink

Gene Summary

The recognition of complex carbohydrate structures on glycoproteins is an important part of several biological processes, including cell-cell recognition, serum glycoprotein turnover, and neutralization of pathogens. The protein encoded by this gene is a type I membrane receptor that mediates the endocytosis of glycoproteins by macrophages. The protein has been shown to bind high-mannose structures on the surface of potentially pathogenic viruses, bacteria, and fungi so that they can be neutralized by phagocytic engulfment. This gene is in close proximity to MRC1L1. The gene loci including this gene, MRC1L1, as well as LOC340843 and LOC340893, consist of two nearly identical, tandemly linked genomic regions, which are thought to be a part of a duplicated region. [provided by RefSeq]

Other Designations

OTTHUMP00000019245|OTTHUMP00000045206|macrophage mannose receptor|mannose receptor C type 1

Disease

- [Alzheimer Disease](#)
- [Asthma](#)
- [Colorectal Neoplasms](#)
- [Genetic Predisposition to Disease](#)
- [Leprosy](#)
- [Sarcoidosis](#)