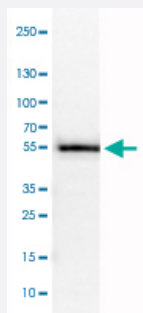


# WWTR1 monoclonal antibody, clone CL0371

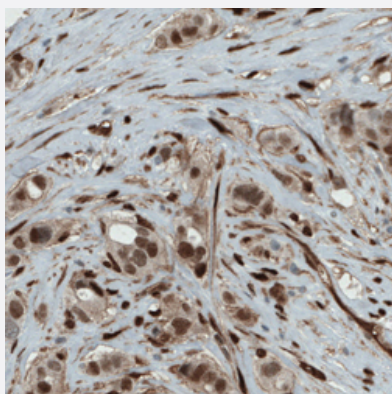
Catalog # MAB15621      Size 100 uL

## Applications



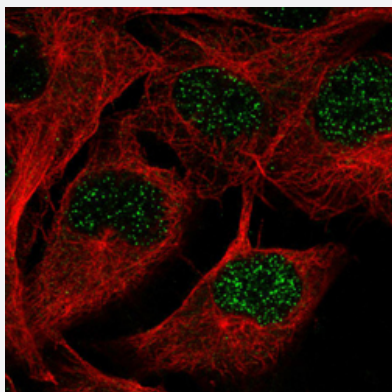
### Western Blot (Cell lysate)

Western Blot analysis of U-251 MG cell lysate with WWTR1 monoclonal antibody, clone CL0371 (Cat # MAB15621).



### Immunohistochemistry (Formalin/PFA-fixed paraffin-embedded sections)

Immunohistochemical staining (Formalin-fixed paraffin-embedded sections) of human breast cancer with WWTR1 monoclonal antibody, clone CL0371 (Cat # MAB15621) shows strong nuclear and moderate cytoplasmic immunoreactivity in tumor cells.



### Immunofluorescence

Immunofluorescent staining of SKMEL cells with WWTR1 monoclonal antibody, clone CL0371 (Cat # MAB15621) (Green) shows spotty nuclear staining. Microtubule probes are visualized in red (where available).

## Specification

Product Description	Mouse monoclonal antibody raised against partial recombinant human WWTR1.
Immunogen	Recombinant protein corresponding to human WWTR1.
Epitope	This antibody binds to an epitope located within the peptide sequence SSWRKKILPESFFKE as determined by overlapping synthetic peptides.
Sequence	MNPKPSSWRKKILPESFFKEPDSGSHSRQSSTDSSGGHPGPRLAGGAQHVRSHSSPASLQLGT GAGAAGSPAQQHAHLRQQSYDVTDELPLPPGWEMTFTATGQRYFLNHIEKITTWQDPRKAMNQP LNHMLNHPAVSST
Host	Mouse
Reactivity	Human
Form	Liquid
Purification	Protein A purification
Isotype	IgG1
Recommend Usage	Immunofluorescence (1-4 ug/mL) Immunohistochemistry (Formalin/PFA-fixed paraffin-embedded sections) (1:50-1:200) Western Blot (1:500-1:1000) The optimal working dilution should be determined by the end user.
Storage Buffer	In PBS, pH 7.2 (40% glycerol, 0.02% sodium azide).
Storage Instruction	Store at 4°C. For long term storage store at -20°C. Aliquot to avoid repeated freezing and thawing.
Note	This product contains sodium azide: a POISONOUS AND HAZARDOUS SUBSTANCE which should be handled by trained staff only.

## Applications

- Western Blot (Cell lysate)

Western Blot analysis of U-251 MG cell lysate with WWTR1 monoclonal antibody, clone CL0371 (Cat # MAB15621).

- Immunohistochemistry (Formalin/PFA-fixed paraffin-embedded sections)

Immunohistochemical staining (Formalin-fixed paraffin-embedded sections) of human breast cancer with WWTR1 monoclonal antibody, clone CL0371 (Cat # MAB15621) shows strong nuclear and moderate cytoplasmic immunoreactivity in tumor cells.

- Immunofluorescence

Immunofluorescent staining of SKMEL cells with WWTR1 monoclonal antibody, clone CL0371 (Cat # MAB15621) (Green) shows spotty nuclear staining. Microtubule probes are visualized in red (where available).

## Gene Info — WWTR1

**Entrez GeneID** [25937](#)**Protein Accession#** [Q9GZV5](#)**Gene Name** WWTR1**Gene Alias** DKFZp586l1419, TAZ**Gene Description** WW domain containing transcription regulator 1**Omim ID** [607392](#)**Gene Ontology** [Hyperlink](#)**Other Designations** transcriptional co-activator with PDZ-binding motif (TAZ)

## Disease

- [Atherosclerosis](#)
- [Calcinosis](#)
- [Coronary Artery Disease](#)