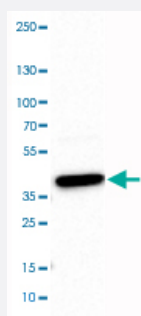


USP46 monoclonal antibody, clone CL0363

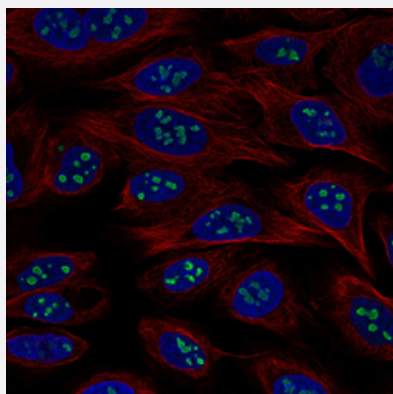
Catalog # MAB15615 Size 100 uL

Applications



Western Blot (Cell lysate)

Western Blot analysis of U-251 MG cell lysate with USP46 monoclonal antibody, clone CL0363 (Cat # MAB15615).



Immunofluorescence

Immunofluorescent staining of U-2 OS cells with USP46 monoclonal antibody, clone CL0363 (Cat # MAB15615) (Green) shows specific staining in nucleoli. Microtubule and nuclear probes are visualized in red and blue, respectively (where available).

Specification

Product Description	Mouse monoclonal antibody raised against partial recombinant human USP46.
Immunogen	Recombinant protein corresponding to human USP46.
Epitope	This antibody binds to an epitope located within the peptide sequence TNETRCLNCE as determined by overlapping synthetic peptides.
Sequence	LFDNYMQQDAHEFLNYLLNTIADILQEEKKQEKGNGKLKNGNMNEPAENNKPELTWWHEIFQGTLTNETRCLNCETVSSKDEDFLDLSVDVEQN
Host	Mouse

Reactivity	Human
Form	Liquid
Purification	Protein A purification
Isotype	IgG2b
Recommend Usage	Immunofluorescence (1-4 ug/mL) Western Blot (1:500-1:1000) The optimal working dilution should be determined by the end user.
Storage Buffer	In PBS, pH 7.2 (40% glycerol, 0.02% sodium azide).
Storage Instruction	Store at 4°C. For long term storage store at -20°C. Aliquot to avoid repeated freezing and thawing.
Note	This product contains sodium azide: a POISONOUS AND HAZARDOUS SUBSTANCE which should be handled by trained staff only.

Applications

- Western Blot (Cell lysate)

Western Blot analysis of U-251 MG cell lysate with USP46 monoclonal antibody, clone CL0363 (Cat # MAB15615).

- Immunofluorescence

Immunofluorescent staining of U-2 OS cells with USP46 monoclonal antibody, clone CL0363 (Cat # MAB15615) (Green) shows specific staining in nucleoli. Microtubule and nuclear probes are visualized in red and blue, respectively (where available).

Gene Info — USP46

Entrez GeneID	64854
Protein Accession#	P62068
Gene Name	USP46
Gene Alias	FLJ11850, FLJ12552, FLJ14283, FLJ39393
Gene Description	ubiquitin specific peptidase 46
Gene Ontology	Hyperlink

Gene Summary

Modification of cellular proteins by ubiquitin is an essential regulatory mechanism controlled by the coordinated action of multiple ubiquitin-conjugating and deubiquitinating enzymes. USP46 belongs to a large family of cysteine proteases that function as deubiquitinating enzymes (Quesada et al., 2004 [PubMed 14715245]).[supplied by OMIM]

Other Designations

ubiquitin specific protease 46

Disease

- [Bipolar Disorder](#)
- [Genetic Predisposition to Disease](#)
- [Schizophrenia](#)