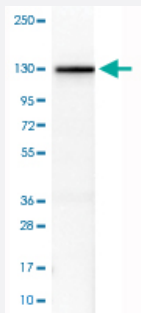


CTCF monoclonal antibody, clone CL0304

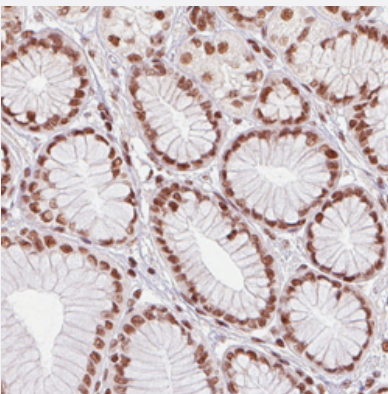
Catalog # MAB15597 Size 100 uL

Applications



Western Blot (Cell lysate)

Western Blot analysis of U-251 MG cell lysate with CTCF monoclonal antibody, clone CL0304 (Cat # MAB15597).



Immunohistochemistry (Formalin/PFA-fixed paraffin-embedded sections)

Immunohistochemical staining (Formalin-fixed paraffin-embedded sections) of human stomach with CTCF monoclonal antibody, clone CL0304 (Cat # MAB15597) shows nuclear positivity in glandular cells.

Specification

Product Description	Mouse monoclonal antibody raised against partial recombinant human CTCF.
Immunogen	Recombinant protein corresponding to human CTCF.
Epitope	This antibody binds to an epitope located within the peptide sequence AYENEVSKEG as determined by overlapping synthetic peptides.
Sequence	QNQTDGGEVVQDVNSSVQMVMMEQLDPTLLQMKTEVMEGTVAPEAEAAVDDTQIITLQVVNME EQPINIGELQLVQVPVPVTPVATTSSVEELQGAYENEVSKEGLAESEPMICHTLPLPEGFQVVKVG ANGEVETLEQGELPPQEDP

Host	Mouse
Reactivity	Human
Form	Liquid
Purification	Protein A purification
Isotype	IgG2a
Recommend Usage	Immunohistochemistry (Formalin/PFA-fixed paraffin-embedded sections) (1:1000-1:2500) Western Blot (1:500-1:1000) The optimal working dilution should be determined by the end user.
Storage Buffer	In PBS, pH 7.2 (40% glycerol, 0.02% sodium azide).
Storage Instruction	Store at 4°C. For long term storage store at -20°C. Aliquot to avoid repeated freezing and thawing.
Note	This product contains sodium azide: a POISONOUS AND HAZARDOUS SUBSTANCE which should be handled by trained staff only.

Applications

- Western Blot (Cell lysate)

Western Blot analysis of U-251 MG cell lysate with CTCF monoclonal antibody, clone CL0304 (Cat # MAB15597).

- Immunohistochemistry (Formalin/PFA-fixed paraffin-embedded sections)

Immunohistochemical staining (Formalin-fixed paraffin-embedded sections) of human stomach with CTCF monoclonal antibody, clone CL0304 (Cat # MAB15597) shows nuclear positivity in glandular cells.

Gene Info — CTCF

Entrez GeneID	10664
Protein Accession#	P49711
Gene Name	CTCF
Gene Alias	-
Gene Description	CCCTC-binding factor (zinc finger protein)
Omim ID	604167
Gene Ontology	Hyperlink

Gene Summary

This gene is a member of the BORIS + CTCF gene family and encodes a transcriptional regulator protein with 11 highly conserved zinc finger (ZF) domains. This nuclear protein is able to use different combinations of the ZF domains to bind different DNA target sequences and proteins. Depending upon the context of the site, the protein can bind a histone acetyltransferase (HAT)-containing complex and function as a transcriptional activator or bind a histone deacetylase (HDAC)-containing complex and function as a transcriptional repressor. If the protein is bound to a transcriptional insulator element, it can block communication between enhancers and upstream promoters, thereby regulating imprinted expression. Mutations in this gene have been associated with invasive breast cancers, prostate cancers, and Wilms' tumors. [provided by RefSeq]

Other Designations

11 zinc finger transcriptional repressor|11-zinc finger protein|CCCTC-binding factor|CTCFL paralog|transcriptional repressor CTCF

Publication Reference

- [Antibodies biotinylated using a synthetic Z-domain from protein A provide stringent in situ protein detection.](#)

Andersson S, Konrad A, Ashok N, Pontén F, Hober S, Asplund A.

The Journal of Histochemistry and Cytochemistry 2013 Nov; 61(11):773.

Application: IHC-P, Human, Uterus

Disease

- [Breast cancer](#)
- [Breast Neoplasms](#)
- [Coronary Disease](#)
- [Genetic Predisposition to Disease](#)
- [Neoplastic Syndromes](#)