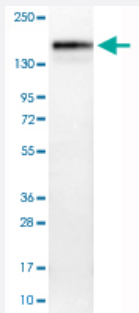


# ANLN monoclonal antibody, clone CL0301

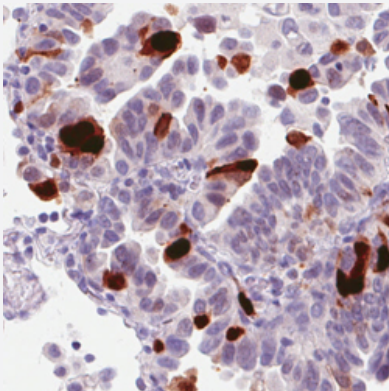
Catalog # MAB15595      Size 100 uL

## Applications



### Western Blot (Cell lysate)

Western Blot analysis of U-251 MG cell lysate with ANLN monoclonal antibody, clone CL0301 (Cat # MAB15595).



### Immunohistochemistry (Formalin/PFA-fixed paraffin-embedded sections)

Immunohistochemical staining (Formalin-fixed paraffin-embedded sections) of human lung adenocarcinoma with ANLN monoclonal antibody, clone CL0301 (Cat # MAB15595) shows strong nuclear immunoreactivity in a subset of tumor cells.

## Specification

<b>Product Description</b>	Mouse monoclonal antibody raised against partial recombinant human ANLN.
<b>Immunogen</b>	Recombinant protein corresponding to human ANLN.
<b>Epitope</b>	This antibody binds to an epitope located within the peptide sequence PSKGELSREICLQSQ as determined by overlapping synthetic peptides.
<b>Sequence</b>	NKSTLSQTVPSKGELSREICLQSQSKDKSTTPGGTGKPFLERFGERCQEHSKESPARSTPHRTP IITPNTKAIQERLFKQDTSSSTTHLAQQLKQERQKELACLRGRFDKGNWSAEKGGNSKSKQLET KQETH

Host	Mouse
Reactivity	Human
Form	Liquid
Purification	Protein A purification
Isotype	IgG1
Recommend Usage	Immunohistochemistry (Formalin/PFA-fixed paraffin-embedded sections) (1:50-1:200) Western Blot (1:500-1:1000) The optimal working dilution should be determined by the end user.
Storage Buffer	In PBS, pH 7.2 (40% glycerol, 0.02% sodium azide).
Storage Instruction	Store at 4°C. For long term storage store at -20°C. Aliquot to avoid repeated freezing and thawing.
Note	This product contains sodium azide: a POISONOUS AND HAZARDOUS SUBSTANCE which should be handled by trained staff only.

## Applications

- Western Blot (Cell lysate)

Western Blot analysis of U-251 MG cell lysate with ANLN monoclonal antibody, clone CL0301 (Cat # MAB15595).

- Immunohistochemistry (Formalin/PFA-fixed paraffin-embedded sections)

Immunohistochemical staining (Formalin-fixed paraffin-embedded sections) of human lung adenocarcinoma with ANLN monoclonal antibody, clone CL0301 (Cat # MAB15595) shows strong nuclear immunoreactivity in a subset of tumor cells.

## Gene Info — ANLN

Entrez GeneID	<a href="#">54443</a>
Protein Accession#	<a href="#">Q9NQW6</a>
Gene Name	ANLN
Gene Alias	DKFZp779A055, Scraps, scra
Gene Description	anillin, actin binding protein
Gene Ontology	<a href="#">Hyperlink</a>
Gene Summary	O

Other Designations

-