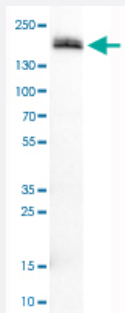


PODXL monoclonal antibody, clone CL0284

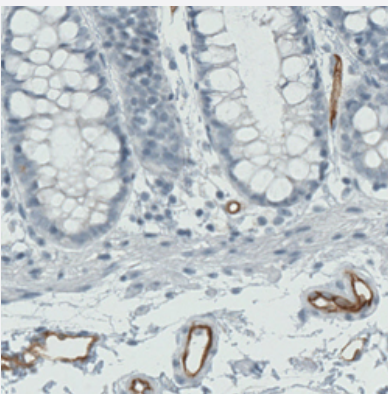
Catalog # MAB15591 Size 100 uL

Applications



Western Blot (Tissue lysate)

Western Blot analysis of human kidney tissue lysate with PODXL monoclonal antibody, clone CL0284 (Cat # MAB15591).



Immunohistochemistry (Formalin/PFA-fixed paraffin-embedded sections)

Immunohistochemical staining (Formalin-fixed paraffin-embedded sections) of human rectum with PODXL monoclonal antibody, clone CL0284 (Cat # MAB15591) shows strong immunoreactivity in the endothelial cells.

Specification

Product Description	Mouse monoclonal antibody raised against partial recombinant human PODXL.
Immunogen	Recombinant protein corresponding to human PODXL.
Epitope	This antibody binds to an epitope located within the peptide sequence GASDEKLISLICRAV as determined by overlapping synthetic peptides.
Sequence	LPETMSSSPTAASTTHRYPKTPSPTVAHESNWAKCEDLETQTQSEKQLVLNLTGNTLCAGGASD EKLISLICRAVKATFNPAQDKCGIRLASVPGSQTVVVKEITHTKLPAKDVYERLKD KWDELKEAGV SDMKLGD

Host	Mouse
Reactivity	Human
Form	Liquid
Purification	Protein A purification
Isotype	IgG2a
Recommend Usage	Immunohistochemistry (Formalin/PFA-fixed paraffin-embedded sections) (1:1000-1:2500) Western Blot (1:500-1:1000) The optimal working dilution should be determined by the end user.
Storage Buffer	In PBS, pH 7.2 (40% glycerol, 0.02% sodium azide).
Storage Instruction	Store at 4°C. For long term storage store at -20°C. Aliquot to avoid repeated freezing and thawing.
Note	This product contains sodium azide: a POISONOUS AND HAZARDOUS SUBSTANCE which should be handled by trained staff only.

Applications

- Western Blot (Tissue lysate)

Western Blot analysis of human kidney tissue lysate with PODXL monoclonal antibody, clone CL0284 (Cat # MAB15591).

- Immunohistochemistry (Formalin/PFA-fixed paraffin-embedded sections)

Immunohistochemical staining (Formalin-fixed paraffin-embedded sections) of human rectum with PODXL monoclonal antibody, clone CL0284 (Cat # MAB15591) shows strong immunoreactivity in the endothelial cells.

Gene Info — PODXL

Entrez GeneID	5420
Protein Accession#	O00592
Gene Name	PODXL
Gene Alias	Gp200, MGC138240, PC, PCLP
Gene Description	podocalyxin-like
Omim ID	602632
Gene Ontology	Hyperlink

Gene Summary

This gene encodes a member of the sialomucin protein family. The encoded protein was originally identified as an important component of glomerular podocytes. Podocytes are highly differentiated epithelial cells with interdigitating foot processes covering the outer aspect of the glomerular basement membrane. Other biological activities of the encoded protein include: binding in a membrane protein complex with Na⁺/H⁺ exchanger regulatory factor to intracellular cytoskeletal elements, playing a role in hematopoietic cell differentiation, and being expressed in vascular endothelium cells and binding to L-selectin. [provided by RefSeq]

Other Designations

-

Disease

- [Genetic Predisposition to Disease](#)
- [Neoplasm Invasiveness](#)
- [Ovarian Neoplasms](#)
- [Prostate cancer](#)
- [Prostatic Neoplasms](#)