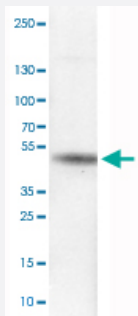


CA12 monoclonal antibody, clone CL0280

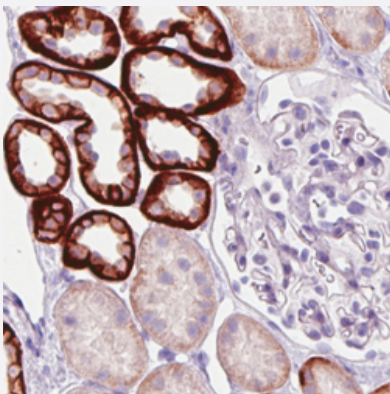
Catalog # MAB15590 Size 100 uL

Applications



Western Blot (Cell lysate)

Western Blot analysis of RT-4 cell lysate with CA12 monoclonal antibody, clone CL0280 (Cat # MAB15590).



Immunohistochemistry (Formalin/PFA-fixed paraffin-embedded sections)

Immunohistochemical staining (Formalin-fixed paraffin-embedded sections) of human kidney with CA12 monoclonal antibody, clone CL0280 (Cat # MAB15590) shows strong membranous and/or moderate cytoplasmic immunoreactivity in subsets of renal tubules, while glomeruli are negative.

Specification

Product Description	Mouse monoclonal antibody raised against partial recombinant human CA12.
Immunogen	Recombinant protein corresponding to human CA12.
Epitope	This antibody binds to an epitope located within the peptide sequence HLQHVKYKGQEAFFVP as determined by overlapping synthetic peptides.
Sequence	TASNKSEGLAVLAVLIEMGSFNPSYDKIFSHLQHVKYKGQEAFFVPGFNIEELLPERTAEYYRYRGSLLTPPCNPTVLWTVFRNPVQISQEQLLALETALYCTHMDDPSPREMINNFRQVQ
Host	Mouse

Reactivity	Human
Form	Liquid
Purification	Protein A purification
Isotype	IgG1
Recommend Usage	Immunohistochemistry (Formalin/PFA-fixed paraffin-embedded sections) (1:200-1:500) Western Blot (1:500-1:1000) The optimal working dilution should be determined by the end user.
Storage Buffer	In PBS, pH 7.2 (40% glycerol, 0.02% sodium azide).
Storage Instruction	Store at 4°C. For long term storage store at -20°C. Aliquot to avoid repeated freezing and thawing.
Note	This product contains sodium azide: a POISONOUS AND HAZARDOUS SUBSTANCE which should be handled by trained staff only.

Applications

- Western Blot (Cell lysate)

Western Blot analysis of RT-4 cell lysate with CA12 monoclonal antibody, clone CL0280 (Cat # MAB15590).

- Immunohistochemistry (Formalin/PFA-fixed paraffin-embedded sections)

Immunohistochemical staining (Formalin-fixed paraffin-embedded sections) of human kidney with CA12 monoclonal antibody, clone CL0280 (Cat # MAB15590) shows strong membranous and/or moderate cytoplasmic immunoreactivity in subsets of renal tubules, while glomeruli are negative.

Gene Info — CA12

Entrez GeneID	771
Protein Accession#	O43570
Gene Name	CA12
Gene Alias	CAXII, FLJ20151, HsT18816
Gene Description	carbonic anhydrase XII
Omim ID	603263
Gene Ontology	Hyperlink

Gene Summary

Carbonic anhydrases (CAs) are a large family of zinc metalloenzymes that catalyze the reversible hydration of carbon dioxide. They participate in a variety of biological processes, including respiration, calcification, acid-base balance, bone resorption, and the formation of aqueous humor, cerebrospinal fluid, saliva, and gastric acid. This gene product is a type I membrane protein that is highly expressed in normal tissues, such as kidney, colon and pancreas, and has been found to be overexpressed in 10% of clear cell renal carcinomas. Two transcript variants encoding different isoforms have been identified for this gene. [provided by RefSeq]

Other Designations

carbonic dehydratase

Pathway

- [Nitrogen metabolism](#)