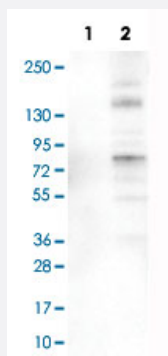


ACSL5 monoclonal antibody, clone CL0275

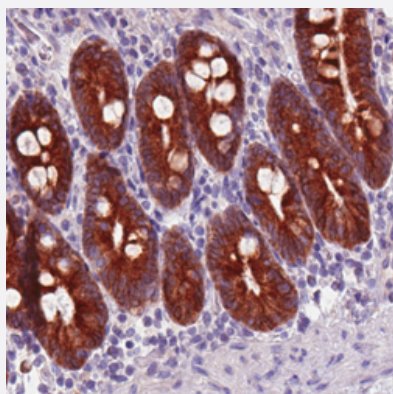
Catalog # MAB15587 Size 100 uL

Applications



Western Blot (Transfected lysate)

Western Blot analysis of Lane 1: negative control (vector only transfected HEK293T cell lysate) and Lane 2: over-expression lysate (co-expressed with a C-terminal myc-DDK tag in mammalian HEK293T cells) with ACSL5 monoclonal antibody, clone CL0275 (Cat # MAB15587).



Immunohistochemistry (Formalin/PFA-fixed paraffin-embedded sections)

Immunohistochemical staining (Formalin-fixed paraffin-embedded sections) of human duodenum with ACSL5 monoclonal antibody, clone CL0275 (Cat # MAB15587) shows strong cytoplasmic and membrane immunoreactivity in the glandular cells.

Specification

Product Description	Mouse monoclonal antibody raised against partial recombinant human ACSL5.
Immunogen	Recombinant protein corresponding to human ACSL5.
Epitope	This antibody binds to an epitope located within the peptide sequence MDPFDDDLKQ as determined by overlapping synthetic peptides.
Sequence	VHIVNKADIAMVICDTPQKALVLIGNVEKGFTPSLKVILMDPFDDDLKQRGEKSGIEILSLYDAENLG KEHFRKPVPPSPEDLSVICFTSGTTGDPK
Host	Mouse

Reactivity	Human
Form	Liquid
Purification	Protein A purification
Isotype	IgG1
Recommend Usage	Immunohistochemistry (Formalin/PFA-fixed paraffin-embedded sections) (1:50-1:200) Western Blot (1:500-1:1000) The optimal working dilution should be determined by the end user.
Storage Buffer	In PBS, pH 7.2 (40% glycerol, 0.02% sodium azide).
Storage Instruction	Store at 4°C. For long term storage store at -20°C. Aliquot to avoid repeated freezing and thawing.
Note	This product contains sodium azide: a POISONOUS AND HAZARDOUS SUBSTANCE which should be handled by trained staff only.

Applications

- Western Blot (Transfected lysate)

Western Blot analysis of Lane 1: negative control (vector only transfected HEK293T cell lysate) and Lane 2: over-expression lysate (co-expressed with a C-terminal myc-DDK tag in mammalian HEK293T cells) with ACSL5 monoclonal antibody, clone CL0275 (Cat # MAB15587).

- Immunohistochemistry (Formalin/PFA-fixed paraffin-embedded sections)

Immunohistochemical staining (Formalin-fixed paraffin-embedded sections) of human duodenum with ACSL5 monoclonal antibody, clone CL0275 (Cat # MAB15587) shows strong cytoplasmic and membrane immunoreactivity in the glandular cells.

Gene Info — ACSL5

Entrez GeneID	51703
Protein Accession#	Q9ULC5
Gene Name	ACSL5
Gene Alias	ACS2, ACS5, FAFL5
Gene Description	acyl-CoA synthetase long-chain family member 5
Omim ID	605677
Gene Ontology	Hyperlink

Gene Summary

The protein encoded by this gene is an isozyme of the long-chain fatty-acid-coenzyme A ligase family. Although differing in substrate specificity, subcellular localization, and tissue distribution, all isozymes of this family convert free long-chain fatty acids into fatty acyl-CoA esters, and thereby play a key role in lipid biosynthesis and fatty acid degradation. This isozyme is highly expressed in uterus and spleen, and in trace amounts in normal brain, but has markedly increased levels in malignant gliomas. This gene functions in mediating fatty acid-induced glioma cell growth. Three transcript variants encoding two different isoforms have been found for this gene. [provided by RefSeq]

Other Designations

FACL5 for fatty acid coenzyme A ligase 5|OTTHUMP00000020489|OTTHUMP00000020490|fatty acid coenzyme A ligase 5|fatty-acid-Coenzyme A ligase, long-chain 5|long-chain acyl-CoA synthetase 5|long-chain fatty acid coenzyme A ligase 5

Pathway

- [Adipocytokine signaling pathway](#)
- [Fatty acid metabolism](#)
- [Metabolic pathways](#)
- [PPAR signaling pathway](#)

Disease

- [Alzheimer Disease](#)
- [Genetic Predisposition to Disease](#)
- [Obesity](#)
- [Tobacco Use Disorder](#)