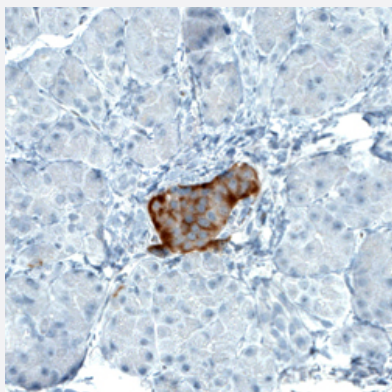


TSPAN7 monoclonal antibody, clone CL0265

Catalog # MAB15582 Size 100 uL

Applications



Immunohistochemistry (Formalin/PFA-fixed paraffin-embedded sections)

Immunohistochemical staining (Formalin-fixed paraffin-embedded sections) of human pancreas with TSPAN7 monoclonal antibody, clone CL0265 (Cat # MAB15582) shows strong immunoreactivity in the endocrine pancreatic islets cells.

Specification

Product Description	Mouse monoclonal antibody raised against partial recombinant human TSPAN7.
Immunogen	Recombinant protein corresponding to human TSPAN7.
Epitope	This antibody binds to an epitope located within the peptide sequence TDCNPQDLHNLTVAA as determined by overlapping synthetic peptides.
Sequence	TFLRTYTDAMQTYNGNDERSRAVDHVQRSLSCCGVQNYTNWSTSPYFLEHGIPPSCCMNETDCNPQDLHNLTVAAATKVNQKGCYDLVTSFMET
Host	Mouse
Reactivity	Human
Form	Liquid
Purification	Protein A purification
Isotype	IgG1

Recommend Usage	Immunohistochemistry (Formalin/PFA-fixed paraffin-embedded sections) (1:200-1:500) The optimal working dilution should be determined by the end user.
Storage Buffer	In PBS, pH 7.2 (40% glycerol, 0.02% sodium azide).
Storage Instruction	Store at 4°C. For long term storage store at -20°C. Aliquot to avoid repeated freezing and thawing.
Note	This product contains sodium azide: a POISONOUS AND HAZARDOUS SUBSTANCE which should be handled by trained staff only.

Applications

- Immunohistochemistry (Formalin/PFA-fixed paraffin-embedded sections)

Immunohistochemical staining (Formalin-fixed paraffin-embedded sections) of human pancreas with TSPAN7 monoclonal antibody, clone CL0265 (Cat # MAB15582) shows strong immunoreactivity in the endocrine pancreatic islets cells.

Gene Info — TSPAN7

Entrez GeneID	7102
Protein Accession#	P41732
Gene Name	TSPAN7
Gene Alias	A15, CCG-B7, CD231, DXS1692E, MRX58, MXS1, TALLA-1, TM4SF2, TM4SF2b
Gene Description	tetraspanin 7
Omim ID	300096 300210
Gene Ontology	Hyperlink
Gene Summary	The protein encoded by this gene is a member of the transmembrane 4 superfamily, also known as the tetraspanin family. Most of these members are cell-surface proteins that are characterized by the presence of four hydrophobic domains. The proteins mediate signal transduction events that play a role in the regulation of cell development, activation, growth and motility. This encoded protein is a cell surface glycoprotein and may have a role in the control of neurite outgrowth. It is known to complex with integrins. This gene is associated with X-linked mental retardation and neuropsychiatric diseases such as Huntington's chorea, fragile X syndrome and myotonic dystrophy. [provided by RefSeq]
Other Designations	CD231 antigen T-cell acute lymphoblastic leukemia associated antigen 1 cell surface glycoprotein A15 membrane component, X chromosome, surface marker 1 tetraspanin protein transmembrane 4 superfamily 2b transmembrane 4 superfamily member 2 transmembrane p

Disease

- [Autistic Disorder](#)
- [Mental Retardation](#)
- [Psychotic Disorders](#)
- [Schizophrenia](#)